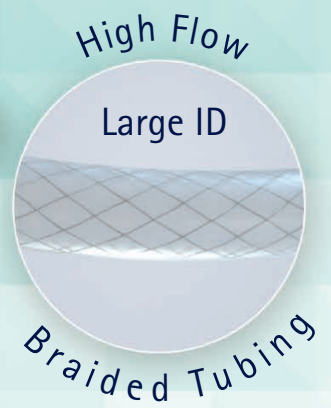


# TUBING KIT

Use with SOFIA® Flow Plus Aspiration Catheter and Gomco® 405 Aspiration Pump

LARGE ID | HIGH FLOW | OPTIMIZED ASPIRATION



# TUBING KIT

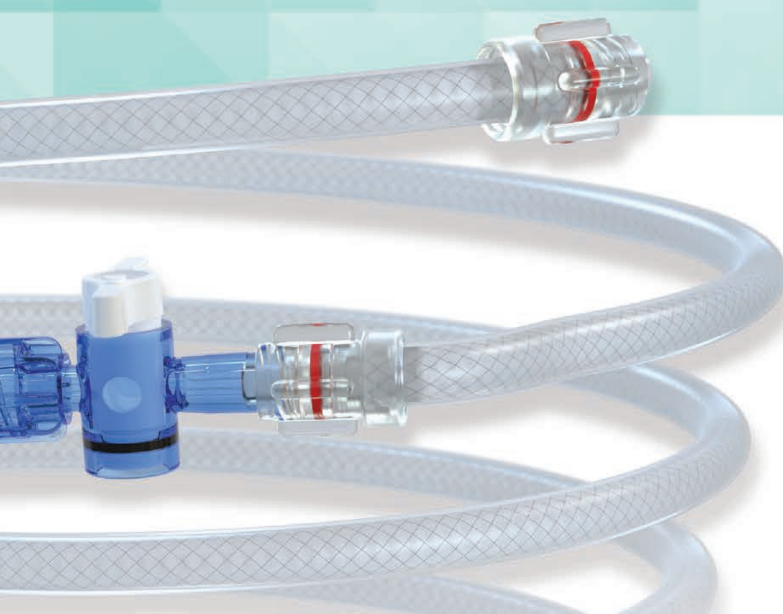
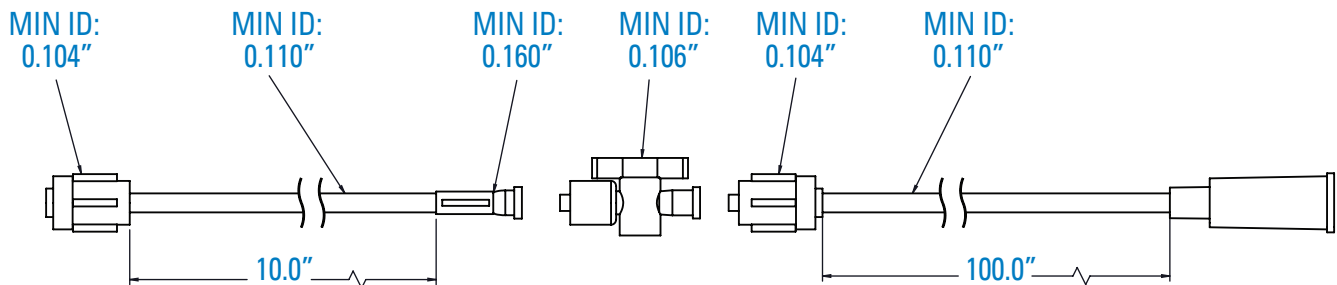
Use with SOFIA® Flow Plus Aspiration Catheter and Gomco® 405 Aspiration Pump

## TUBING KIT

LARGE ID | HIGH FLOW | OPTIMIZED ASPIRATION

PRODUCT CODE	PROXIMAL TUBING LENGTH	DISTAL TUBING LENGTH	TOTAL TUBING LENGTH	MINIMUM TUBING ID	MINIMUM 1-WAY STOPCOCK ID	MINIMUM LUER ID
MVTK110	100 in / 254 cm	10 in / 25 cm	110 in / 279 cm	0.110 in / 2.8 mm	0.106 in / 2.7 mm	0.104 in / 2.6 mm

One kit per box, includes proximal tubing, 1-way stopcock, and distal tubing



**LARGE BORE 0.106" ID STOPCOCK**  
controls flow without limiting aspiration power<sup>1</sup>

**LARGE 0.110" ID BRAIDED KINK RESISTANT TUBING**  
provides consistent high flow aspiration<sup>1</sup>

**STANDARD PROXIMAL CONNECTOR**  
offers secure connection to vacuum pump<sup>1</sup>

<sup>1</sup>TR17-226, TR18-226



[microvention.com](http://microvention.com)

MicroVention Worldwide  
Innovation Center  
35 Enterprise  
Aliso Viejo, CA 92656  
PH 714.247.8000  
PH 1.800.990.8368

For professional use. CAUTION: Federal (United States) law restricts this device to sale by or on the order of a physician. See instructions for use for full prescribing information, including indications, contraindications, warnings, precautions and adverse events.

The SOFIA® Flow Plus Aspiration Catheter with the Gomco® 405 Aspiration Pump and MicroVention® Tubing Kit is intended for use in the revascularization of patients with acute ischemic stroke secondary to intracranial large vessel occlusive disease (within the internal carotid, middle cerebral – M1 and M2 segments, basilar, and vertebral arteries) within 8 hours of symptom onset. Patients who are ineligible for intravenous tissue plasminogen activator (IV t-PA) or who fail IV t-PA therapy are candidates for treatment.

# SOFIA<sup>®</sup> FLOW PLUS

ASPIRATION CATHETER



EXTREMELY  
TRACKABLE

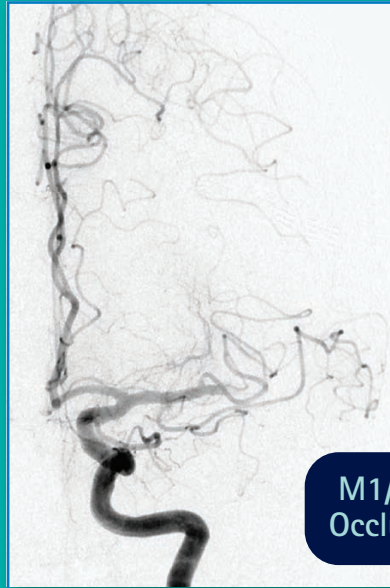
**LARGE LUMEN**

ASPIRATION  
CATHETER

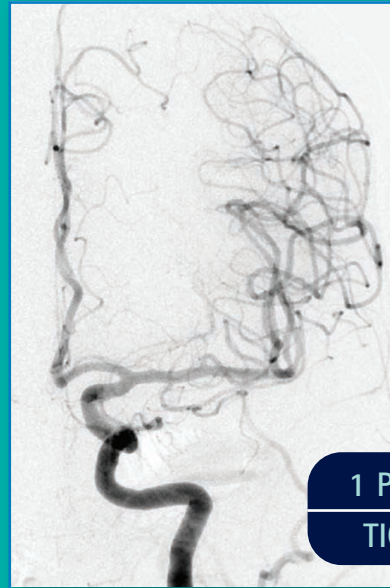
# CLINICAL EXPERIENCE

Courtesy of Dr. Mohlenbruch, Heidelberg University Hospital

Case 1

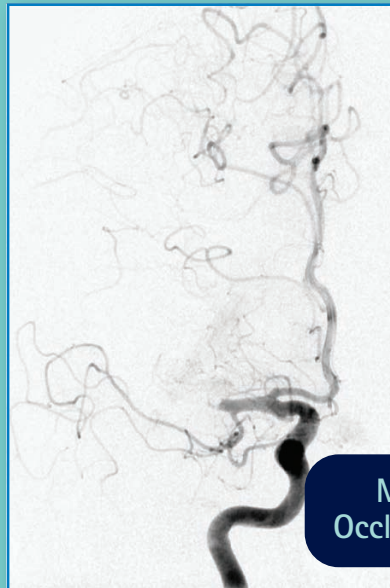


M1/M2 Occlusion

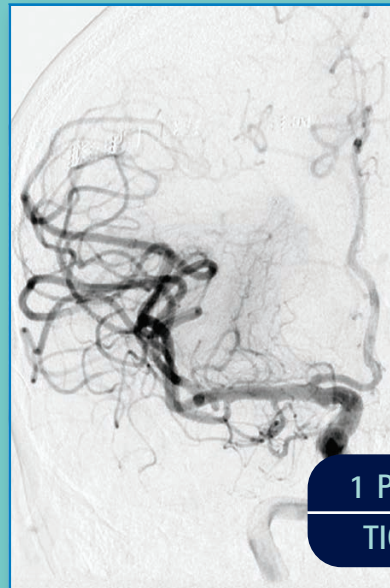


1 PASS  
TICI 3

Case 2



M1 Occlusion



1 PASS  
TICI 3

## Design Features

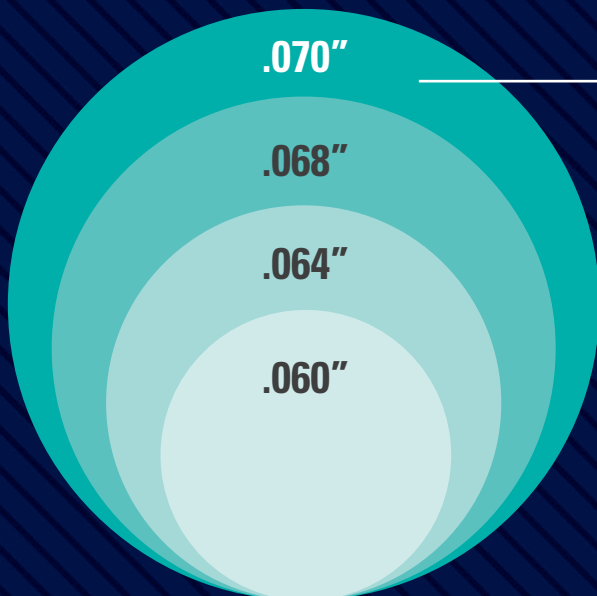
ATTRIBUTE	BENEFIT
0.070" Lumen	Wide Inner Lumen for Increased Aspiration Ability
Exceptionally Soft Distal Tip	Allows Smooth Bypass of the Ophthalmic Artery
125cm Working Length Available	More Microcatheter Length for Retrieval Device Deployment
Long 131cm Working Length Available	Ability to Reach Distal Vessels/Occlusions
Steam Shapeable Tip and Torqueable Shaft	Ability to Steer Distal Tip Past Difficult Bifurcations
Enhanced Kink Resistance	Maintains Distal and Proximal Lumen Integrity

Combined ASPIRATION POWER

## The SOFIA<sup>®</sup> FLOW PLUS Catheter

Offers a large .070" lumen

- ◆ Great aspiration power and flow rate\*
- ◆ Ability to capture large clots\*



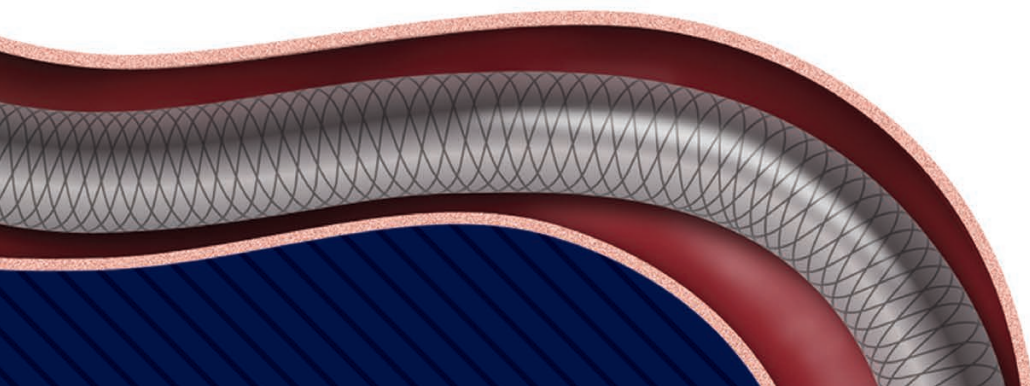
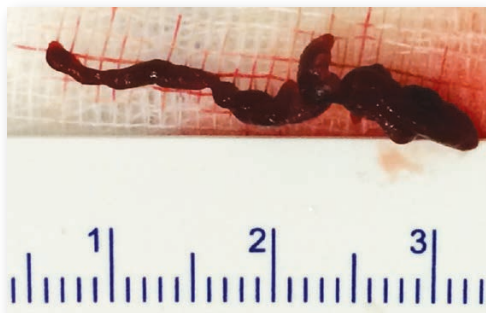
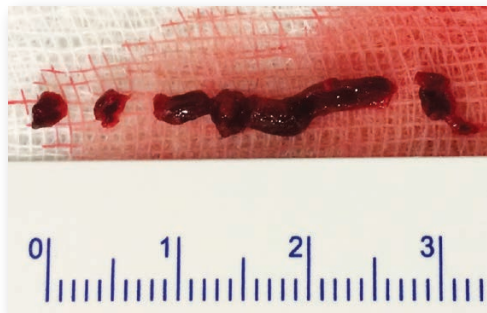
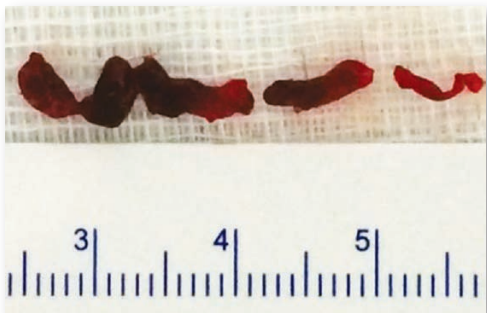
The Sofia<sup>®</sup> Flow Plus Catheter has a large .070" lumen for aspiration

\* TR17-095A. Sofia Catheter Comparative Data.

and EXCELLENT TRACKABILITY\*



A LARGER LUMEN MAY CAPTURE LARGER CLOTS



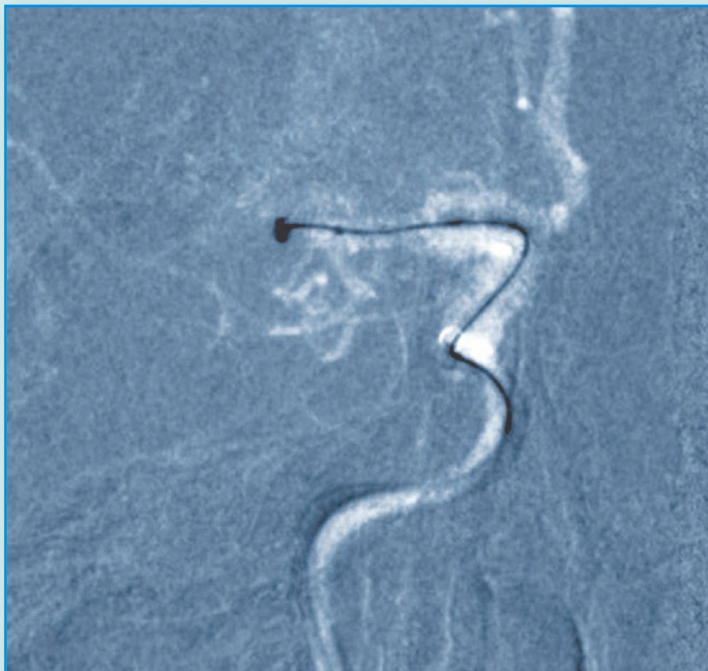
# EXCELLENT NAVIGATION AND TRACKABILITY

SOFIA® FLOW PLUS Catheter can track to the M2 segment.



Courtesy of Dr. Wenderoth, Liverpool Hospital

SOFIA® FLOW PLUS Catheter can track to M1 occlusions without crossing the clot with a guidewire or microcatheter.



Courtesy of Dr. Mohlenbruch, Heidelberg University Hospital

## TORQUEABILITY

*Braid overlay provides excellent torque response to bypass difficult bifurcations*

## 1:1 PUSHABILITY

*Hybrid braid and coil reinforcement provides superior push response*

## KINK RESISTANCE

*Track through tortuous distal bends without kinking*

# SOFIA® FLOW PLUS

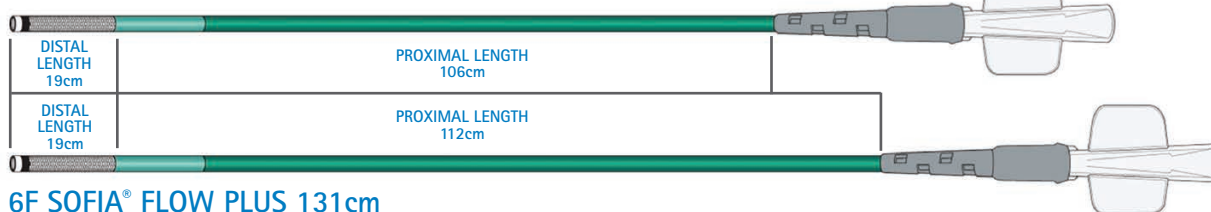
## ASPIRATION CATHETER

LARGE INNER DIAMETER FOR IMPROVED ASPIRATION POWER  
AND ENHANCED SOFTNESS FOR SUPERIOR DISTAL NAVIGATION

PRODUCT CODE	CATHETER SIZE	PROXIMAL OD	DISTAL OD	ID	WORKING LENGTH	DISTAL LENGTH	PROXIMAL LENGTH	DISTAL TIP SHAPE
DA6125ST	6F	0.0825" / 2.1mm	0.0815" / 2.1mm	0.070"	125cm	19cm	106cm	Straight
DA6131ST	6F	0.0825" / 2.1mm	0.0815" / 2.1mm	0.070"	131cm	19cm	112cm	Straight

One unit per box, includes shaping mandrel and introducer sheath

### 6F SOFIA® FLOW PLUS 125cm



### 6F SOFIA® FLOW PLUS 131cm

ASPIRATION ACCESSORIES	PRODUCT CODE	DESCRIPTION
<b>Gomco® 405 Aspiration Pump</b>	01-12-4005	Includes (non-sterile): 1 ea. Aspiration Pump 115V/60Hz, 1 ea. 1500 ml disposable canister, 1 ea. disposable 15" clear PVC tubing, 3 ea. disposable hydrophobic bacterial filters
<b>Canister &amp; Accessory Kit</b>	20-08-0009	Includes (non-sterile): 1 ea. 1500 ml disposable canister, 1 ea. disposable 15" clear PVC tubing, and 1 ea. disposable hydrophobic bacteria filter
<b>Tubing Kit</b>	MVTK110	Includes (sterile): 1 ea. Proximal tubing, 1-way stopcock and distal tubing



## SOFIA® FLOW PLUS Aspiration Catheter is compatible with FDA cleared stentriever devices

**INDICATIONS FOR USE:** The SOFIA® Flow Plus Aspiration Catheter with the Gomco® 405 Aspiration Pump and MicroVention® Tubing Kit is intended for use in the revascularization of patients with acute ischemic stroke secondary to intracranial large vessel occlusive disease (within the internal carotid, middle cerebral – M1 and M2 segments, basilar, and vertebral arteries) within 8 hours of symptom onset. Patients who are ineligible for intravenous tissue plasminogen activator (IV t-PA) or who fail IV t-PA therapy are candidates for treatment.

**RX Only:** Federal (USA) law restricts this device to sale by or on the order of a physician. This device should be used only by physicians trained in percutaneous, intravascular techniques and procedures at medical facilities with the appropriate fluoroscopy equipment. The SOFIA® FLOW PLUS Catheter should only be used by physicians who have received appropriate training for the device.



[microvention.com](http://microvention.com)

MicroVention Worldwide  
Innovation Center  
35 Enterprise  
Aliso Viejo, CA 92656  
PH 714.247.8000  
PH 1.800.990.8368

MICROVENTION and SOFIA are registered trademarks of MicroVention, Inc.  
Refer to Instructions for Use, contraindications and warnings for additional information.  
© 2018 MicroVention, Inc. MM535 Rev. A V2 06/18