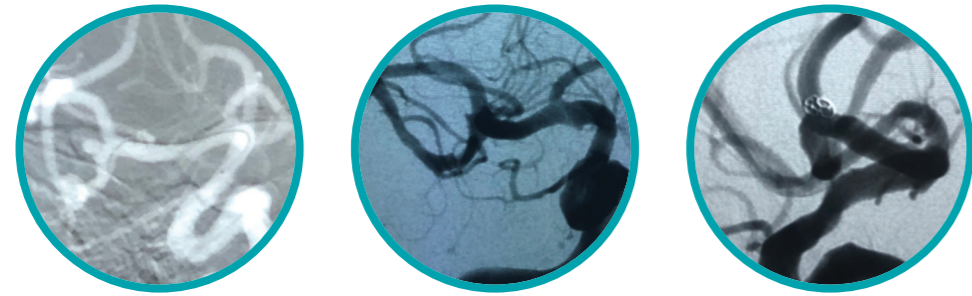
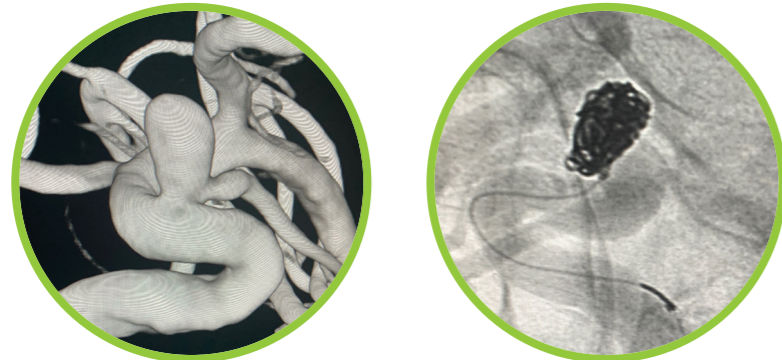


OPTIMA DELIVERS

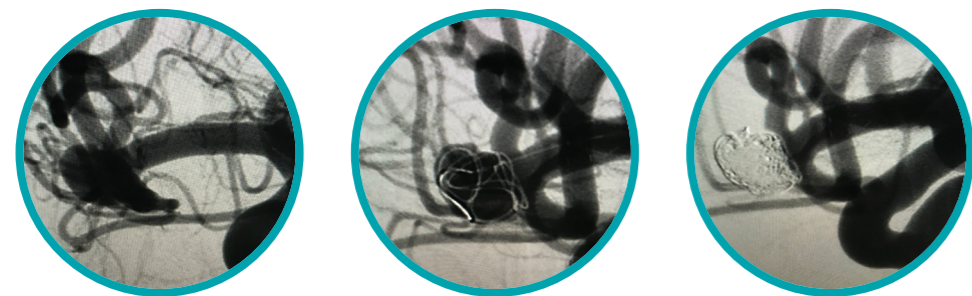
CONFIDENCE



Ruptured 2.2mm X 1.7mm MCA aneurysm treated by a West Coast physician with a single 2mm X 2cm Optima Complex Super Soft Coil. Optima demonstrated excellent microcatheter stability and fast first button press detachment.



A 6.7 mm ophthalmic aneurysm treated by a Southeast physician. With the ostium of the ophthalmic artery incorporated at the base of the aneurysm, the physician chose a 5mm X 17cm to provide a soft, stable frame that preserved the origin. The aneurysm was then filled and finished with three Optima Complex Super Soft coils, all with reliable and fast first button detach.



A 7mm X 9mm MCA aneurysm treated by a Southeast physician with planned Y stent. An Optima 7mm X 13cm Complex Soft provided excellent frame behind 1 stent, eliminating the need for the Y. Filled and finished with 11 more Optima coils, all with 1st button detach.

Ordering Information

Complete offering with a full range of Complex and Helical coils in Standard, Soft and Super Soft configurations to provide options in any clinical scenario

MODEL NO.	IMPLANT SIZE
COMPLEX 10 SUPER SOFT	
OPTI0101CSS10	1mm x 1cm
OPTI0102CSS10	1mm x 2cm
OPTI0103CSS10	1mm x 3cm
OPTI0104CSS10	1mm x 4cm
OPTI0152CSS10	1.5mm x 2cm
OPTI0153CSS10	1.5mm x 3cm
OPTI0154CSS10	1.5mm x 4cm
OPTI0202CSS10	2mm x 2cm
OPTI0203CSS10	2mm x 3cm
OPTI0204CSS10	2mm x 4cm
OPTI0206CSS10	2mm x 6cm
OPTI0208CSS10	2mm x 8cm
OPTI0253CSS10	2.5mm x 3cm
OPTI0254CSS10	2.5mm x 4cm
OPTI0256CSS10	2.5mm x 6cm
OPTI0304CSS10	3mm x 4cm
OPTI0306CSS10	3mm x 6cm
OPTI0308CSS10	3mm x 8cm
OPTI0310CSS10	3mm x 10cm
OPTI0356CSS10	3.5mm x 6cm
OPTI0358CSS10	3.5mm x 8cm
OPTI0406CSS10	4mm x 6cm
OPTI0408CSS10	4mm x 8cm
OPTI0410CSS10	4mm x 10cm
OPTI0508CSS10	5mm x 8cm
OPTI0510CSS10	5mm x 10cm
OPTI0513CSS10	5mm x 13cm

MODEL NO.	IMPLANT SIZE
COMPLEX 10 STANDARD	
OPTI0517CST10	5mm x 17cm
OPTI0611CST10	6mm x 11cm
OPTI0620CST10	6mm x 20cm
OPTI0713CST10	7mm x 13cm
OPTI0724CST10	7mm x 24cm
OPTI0816CST10	8mm x 16cm
OPTI0827CST10	8mm x 27cm
OPTI0923CST10	9mm x 23cm
OPTI0930CST10	9mm x 30cm
OPTI1027CST10	10mm x 27cm
OPTI1034CST10	10mm x 34cm
COMPLEX 18	
OPTI0620COM18	6mm x 20cm
OPTI0724COM18	7mm x 24cm
OPTI0827COM18	8mm x 27cm
OPTI0930COM18	9mm x 30cm
OPTI1034COM18	10mm x 34cm
OPTI1137COM18	11mm x 37cm
OPTI1240COM18	12mm x 40cm
OPTI1343COM18	13mm x 43cm
OPTI1447COM18	14mm x 47cm
OPTI1550COM18	15mm x 50cm
OPTI1655COM18	16mm x 55cm
OPTI1860COM18	18mm x 60cm
OPTI2065COM18	20mm x 65cm
OPTI2265COM18	22mm x 65cm
OPTI2465COM18	24mm x 65cm

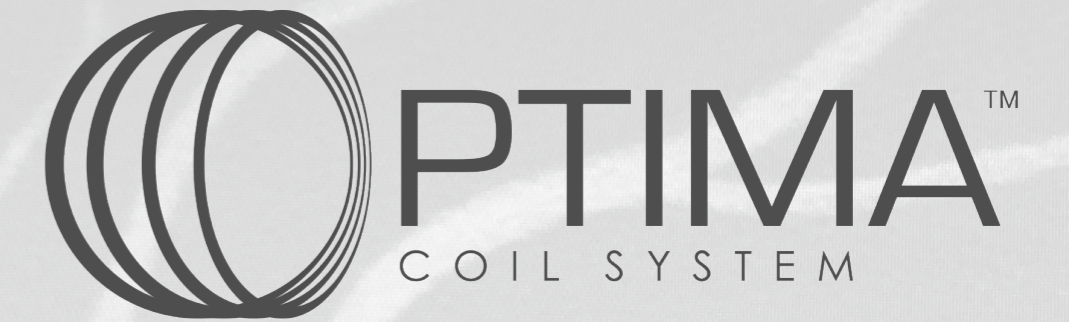
MODEL NO.	IMPLANT SIZE
COMPLEX 10 SOFT	
OPTI0203CSF10	2mm x 3cm
OPTI0204CSF10	2mm x 4cm
OPTI0206CSF10	2mm x 6cm
OPTI0208CSF10	2mm x 8cm
OPTI0255CSF10	2.5mm x 5cm
OPTI0306CSF10	3mm x 6cm
OPTI0308CSF10	3mm x 8cm
OPTI0310CSF10	3mm x 10cm
OPTI0407CSF10	4mm x 7cm
OPTI0413CSF10	4mm x 13cm
OPTI0509CSF10	5mm x 9cm
OPTI0517CSF10	5mm x 17cm
OPTI0611CSF10	6mm x 11cm
OPTI0620CSF10	6mm x 20cm
OPTI0713CSF10	7mm x 13cm
OPTI0724CSF10	7mm x 24cm
OPTI0816CSF10	8mm x 16cm
OPTI0827CSF10	8mm x 27cm
COMPLEX 10 STANDARD	
OPTI0517CST10	5mm x 17cm
OPTI0611CST10	6mm x 11cm
OPTI0620CST10	6mm x 20cm
OPTI0713CST10	7mm x 13cm
OPTI0724CST10	7mm x 24cm
OPTI0816CST10	8mm x 16cm
OPTI0827CST10	8mm x 27cm
OPTI0923CST10	9mm x 23cm
OPTI0930CST10	9mm x 30cm
OPTI1027CST10	10mm x 27cm
OPTI1034CST10	10mm x 34cm
HELICAL 10 STANDARD	
OPTI0615HST10	6mm x 15cm
OPTI0620HST10	6mm x 20cm
OPTI0720HST10	7mm x 20cm
OPTI0730HST10	7mm x 30cm
OPTI0820HST10	8mm x 20cm
OPTI0830HST10	8mm x 30cm
OPTI0930HST10	9mm x 30cm
OPTI1030HST10	10mm x 30cm

MODEL NO.	IMPLANT SIZE
HELICAL 10 SUPER SOFT	
OPTI0101HSS10	1mm x 1cm
OPTI0102HSS10	1mm x 2cm
OPTI0103HSS10	1mm x 3cm
OPTI0104HSS10	1mm x 4cm
OPTI0151HSS10	1.5mm x 1cm
OPTI0152HSS10	1.5mm x 2cm
OPTI0153HSS10	1.5mm x 3cm
OPTI0154HSS10	1.5mm x 4cm
OPTI0201HSS10	2mm x 1cm
OPTI0202HSS10	2mm x 2cm
OPTI0203HSS10	2mm x 3cm
OPTI0204HSS10	2mm x 4cm
OPTI0206HSS10	2mm x 6cm
OPTI0208HSS10	2mm x 8cm
OPTI0253HSS10	2.5mm x 3cm
OPTI0254HSS10	2.5mm x 4cm
OPTI0256HSS10	2.5mm x 6cm
OPTI0304HSS10	3mm x 4cm
OPTI0306HSS10	3mm x 6cm
OPTI0308HSS10	3mm x 8cm
OPTI0310HSS10	3mm x 10cm
OPTI0406HSS10	4mm x 6cm
OPTI0408HSS10	4mm x 8cm
OPTI0410HSS10	4mm x 10cm
OPTI0506HSS10	5mm x 6cm
OPTI0508HSS10	5mm x 8cm
OPTI0510HSS10	5mm x 10cm
HELICAL 10 SOFT	
OPTI0304HSF10	3mm x 4cm
OPTI0306HSF10	3mm x 6cm
OPTI0308HSF10	3mm x 8cm
OPTI0310HSF10	3mm x 10cm
OPTI0406HSF10	4mm x 6cm
OPTI0408HSF10	4mm x 8cm
OPTI0410HSF10	4mm x 10cm
OPTI0506HSF10	5mm x 6cm
OPTI0508HSF10	5mm x 8cm
OPTI0510HSF10	5mm x 10cm
OPTI0606HSF10	6mm x 6cm
OPTI0608HSF10	6mm x 8cm
OPTI0610HSF10	6mm x 10cm

MODEL NO.	IMPLANT SIZE
XCEL DETACHMENT CONTROLLER	
XCEL	

For a list of indications, warnings, precautions, and contraindications, refer IFU-010.

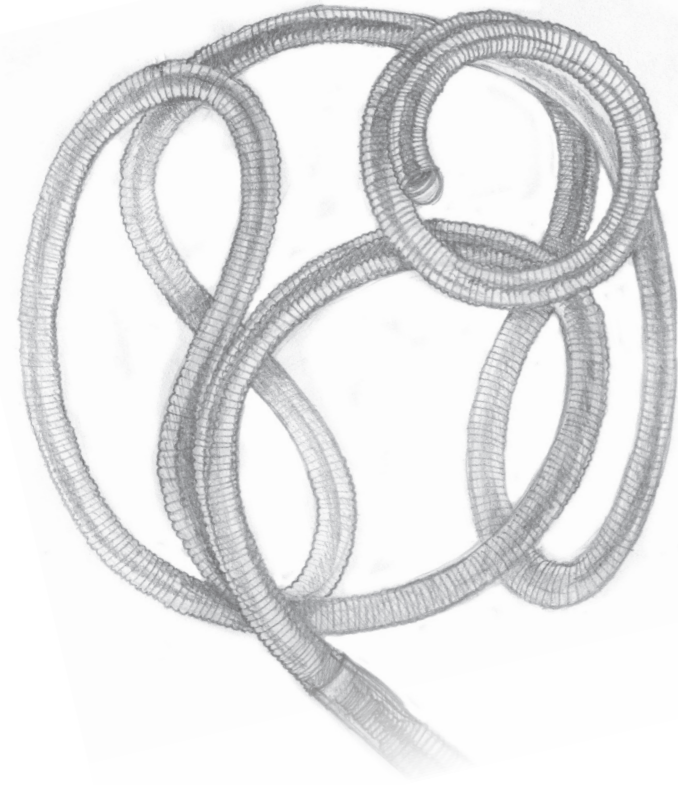
Balt USA
29 Parker, Irvine, CA 92618 • tel 949.788.1443 fax 949.788.1444 • balt-usa.com
Optima is a Trademark of Balt USA, LLC © 2019 BAL T USA MKTG-165 Rev. A



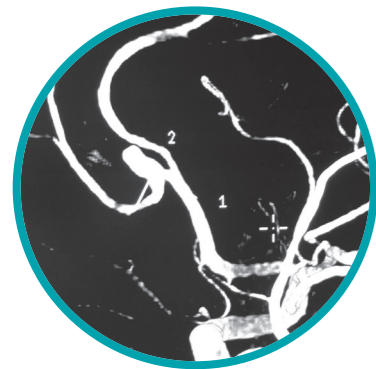
DELIVERS



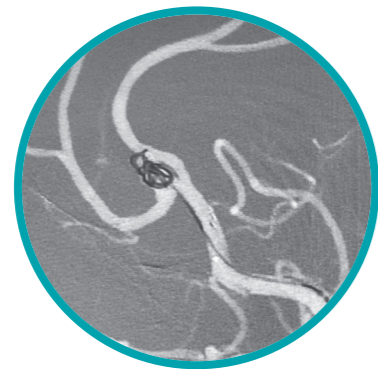
OPTIMA DELIVERS SOFTNESS



- **Unique open loop** configuration offers **optimal combination** of outstanding **shape-memory** and **random space seeking**
- **Short proximal tail** for **reduced kickback**, even with tenuous microcatheter position
- **3 softness profiles** optimized for all coiling needs



A challenging 4.7mm X 3mm pericallosal aneurysm with very wide neck treated by a Southeast physician.

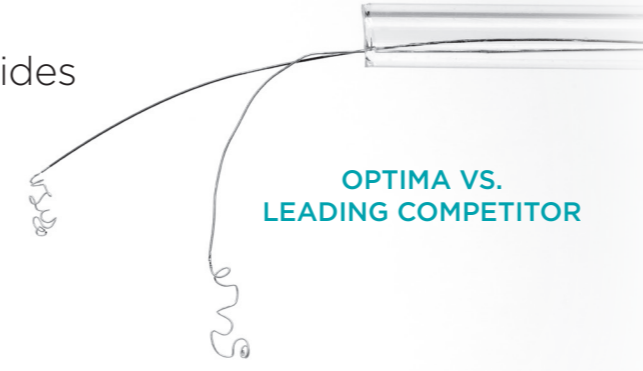


Despite the use of a stent, catheter position was very tenuous. A 4mm X 8cm Optima Complex Super Soft coil was chosen for softness and provided outstanding microcatheter stability.



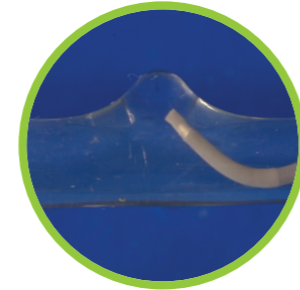
Aneurysm was filled with 3.5mm X 6cm and 3mm X 6cm Complex Super Soft coils, providing stable microcatheter position throughout treatment.

- Unparalleled **distal pusher softness** provides **best-in-class microcatheter stability**

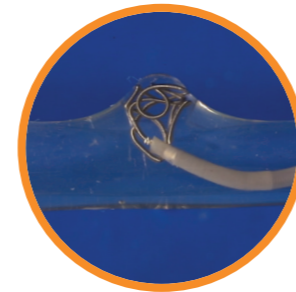
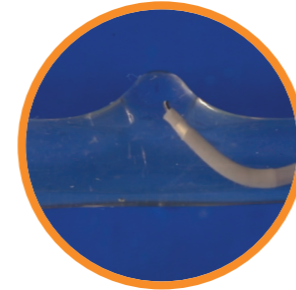


OPTIMA VS. LEADING COMPETITOR

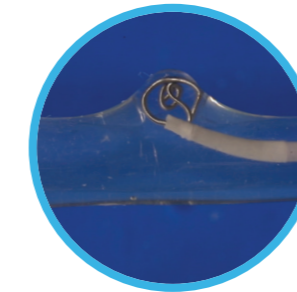
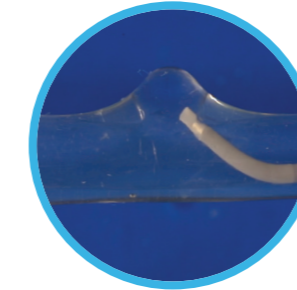
OPTIMA DELIVERS STABILITY



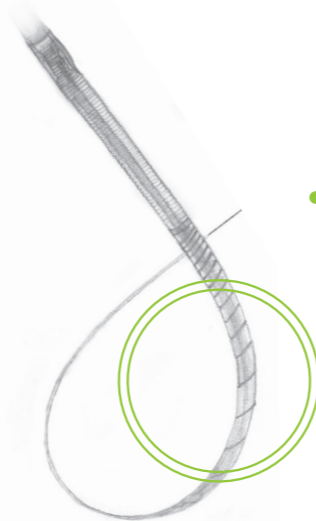
OPTIMA: Microcatheter tip and shaft show practically zero movement through deployment of a 2.5mm X 4cm Super Soft.



COMPETITOR A: Demonstrates significant straightening of the microcatheter tip as the detachment zone is exposed on a soft 2.5mm X 4mm coil.



COMPETITOR B: Shows significant straightening of both the microcatheter tip and shaft as the detachment zone is exposed during deployment of a soft 2mm X 2mm coil.



- **Unique laser cut hypotube** transition to body coil **optimizes delivery** through microcatheter

OPTIMA DELIVERS RELIABILITY



- **Highly reliable detachment** system that has been extensively tested to the highest standard in the industry.*
- Detachment in an instant
 - **<1 second detachment time**
- **Rapid detachment** process for efficient case times (**99% first attempt detachment**)

*Data On File