

YOUR FIRST CHOICE FOR VESSEL SELECTIVITY AND ACCESS

Glidecath[®]

Hydrophilic Coated Catheter

GLIDECATH[®] Hydrophilic Coated Catheter

All catheters packed 5 per box
(*Yashiro packed 3 per box)

TIP SHAPES	CATHETER LENGTH							
	4 Fr	65 cm	70 cm	100 cm	120 cm	125 cm	135 cm	150 cm
Straight	CG412	-	-	CG413	CG414	-	-	CG431
Angle	CG415	-	-	CG416	CG417	-	-	CG432
C1	CG408	-	-	-	-	-	-	-
C2	CG409	-	-	CG410	-	-	-	CG434
J-Tip	CG411	-	-	-	-	-	-	-
Yashiro*	-	CG422	-	-	-	-	-	-
Sim 1	-	-	-	CG401	-	-	-	-
Sim 2	-	-	-	CG402	-	-	-	-
Sim 3	-	-	-	CG403	-	-	-	-
H1	-	-	-	CG404	-	-	-	-
JB1	-	-	-	CG405	-	-	-	-
JB2	-	-	-	CG406	-	-	-	-
JR 4.0	-	-	-	-	-	-	-	CG435
RAVI MG1	-	-	-	-	-	CG440	-	-
RAVI MG2	-	-	-	-	-	-	CG441	CG442
MP	-	-	-	CG418	-	-	-	-
Mani	-	-	-	CG407	-	-	-	-
Pigtail	-	-	-	-	-	-	-	CG433
PV Multicurve	-	-	-	-	-	-	-	CG430

TIP SHAPES	CATHETER LENGTH							
	5 Fr	65 cm	70 cm	100 cm	120 cm	125cm	135 cm	150 cm
Straight	CG505	-	-	CG506	-	-	-	-
Angle Taper	CG507	-	-	CG508	-	-	-	-
C1	CG501	-	-	-	-	-	-	-
C2	CG502	-	-	CG503	-	-	-	-
J-Tip	CG504	-	-	-	-	-	-	-
Yashiro*	-	CG519	-	-	-	-	-	-
Sim 1	-	-	-	CG510	-	-	-	-
Sim 2	CG521	-	-	CG511	-	-	-	-
Sim 3	-	-	-	CG512	-	-	-	-
H1	-	-	-	CG513	-	-	-	-
JB1	-	-	-	CG514	-	-	-	-
JB2	-	-	-	CG515	-	-	-	-
MP	-	-	-	CG509	-	-	-	-
Mani	-	-	-	CG516	-	-	-	-

TIP SHAPES	CATHETER LENGTH							
	5 Fr XP	65 cm	70 cm	100 cm	120 cm	125 cm	135 cm	150 cm
Straight	RF*ZM7510GM	-	-	RF*ZM75110M	-	-	-	RF*ZM75115JM
Angle	RF*ZV9510GM	-	-	RF*ZV95110M	-	-	-	-
C2	RF*ZB5510GM	-	-	-	-	-	-	-
Sim 1	-	-	-	RF*WA15110M	-	-	-	-
Sim 2	-	-	-	RF*WA25110M	-	-	-	-
H1	-	-	-	RF*WB15110M	-	-	-	-
RAVI MG1	-	-	-	-	-	RF*ZRV511CM	-	-
RAVI MG2	-	-	-	-	-	-	RF*ZUF511DJM	RF*ZUF5115JM

PUSHING BOUNDARIES

Terumo Interventional Systems is **committed to your success** with innovative procedural solutions and ongoing support for your most challenging cases.

We are relentlessly seeking new ways to help you apply effective solutions and achieve **better outcomes for more patients.**



FIND OUT MORE

US: 800.862.4143
CA: 833.883.7866

US: terumo.com
CA: terumocanada.ca

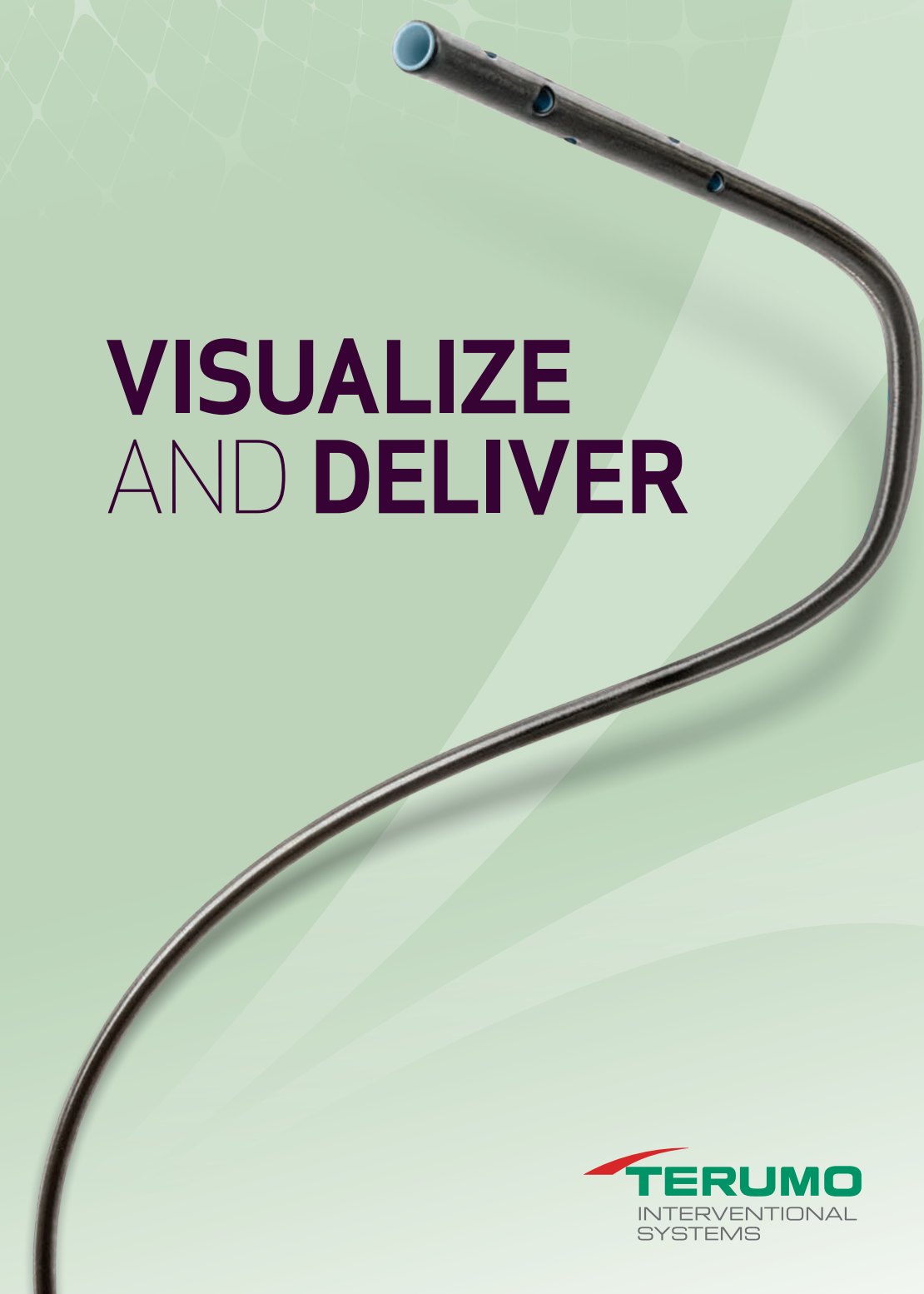
Reference:
1. Data on file.

RX ONLY. The advertisement is directed to physicians only, and not to consumers. Refer to product labels and packaging insert for complete warnings, precautions, potential complications, and instructions for use. Products may not have regulatory approval in all countries. Please contact your local sales representative if you have questions about the availability of products in your area.

©2020 Terumo Medical Corporation and Terumo Medical Canada Inc. All rights reserved. The third-party trademarks used herein are trademarks of their respective owners. All other brand names are trademarks or registered trademarks of Terumo. PM-03556



VISUALIZE AND DELIVER



Glidecath®

Hydrophilic Coated Catheter

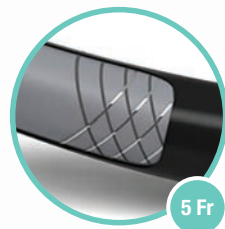
YOUR PROCEDURAL SOLUTION FOR NAVIGATION AND SELECTIVITY

Determine the best approach to challenging lesions

- Navigate difficult vessel anatomy with smooth tracking facilitated by TERUMO Glide Technology™
- Leverage superior kink resistance to achieve ideal flow rates for diagnostic imaging^{1,a}

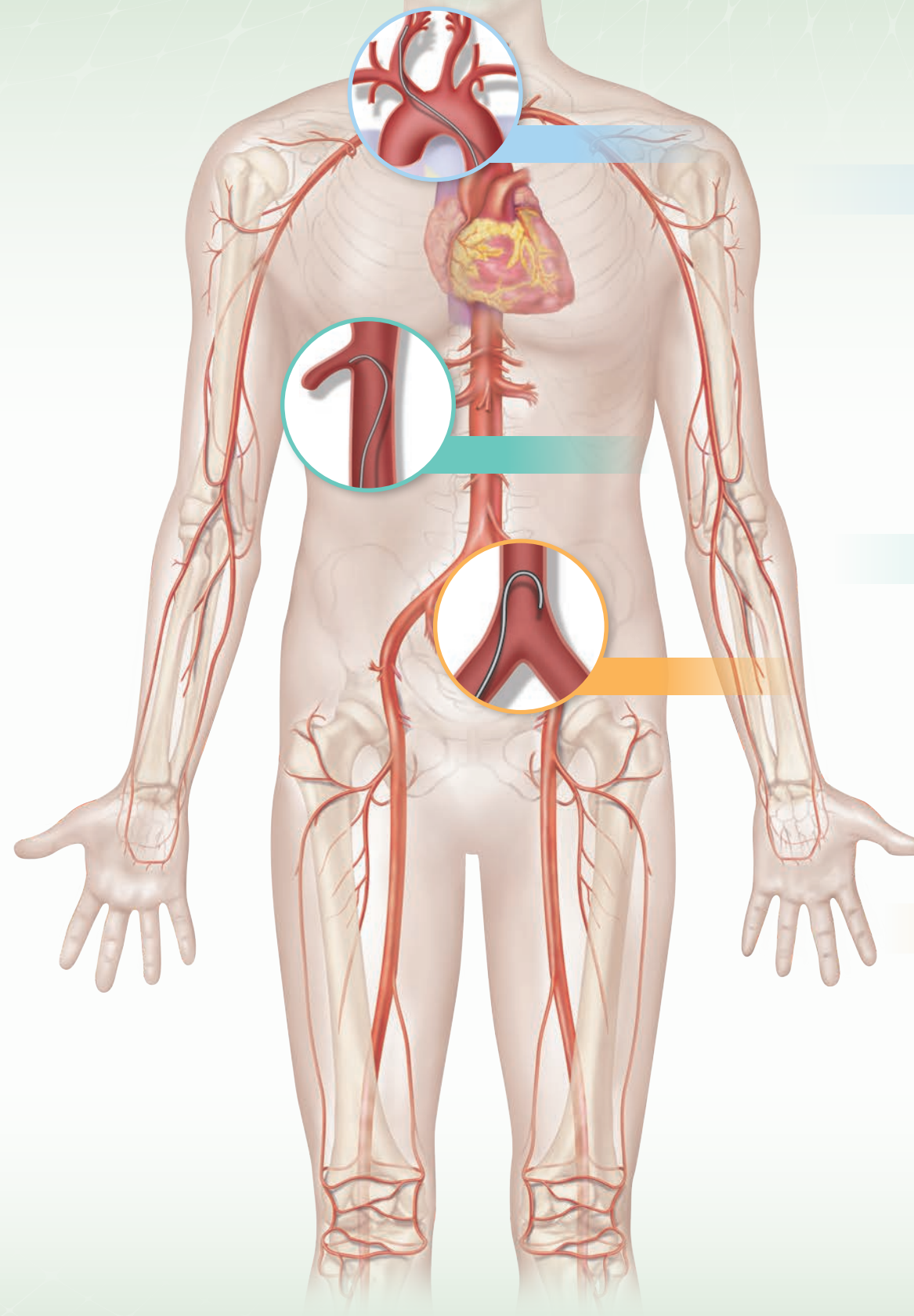
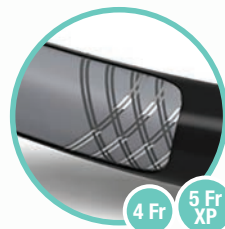
Single-braided

- Reach distal visceral vessels with best-in-class trackability^{1,a}
- Approach tortuous anatomy with best-in-class pushability^{1,a}

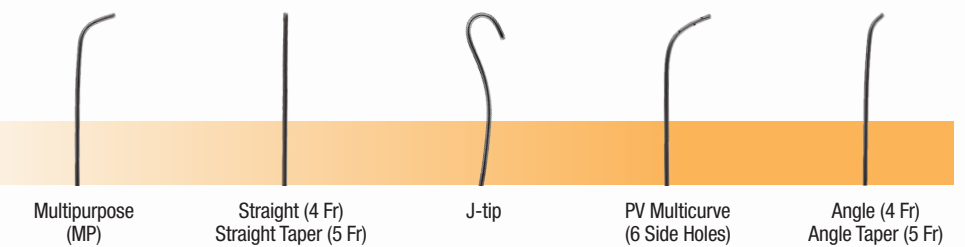
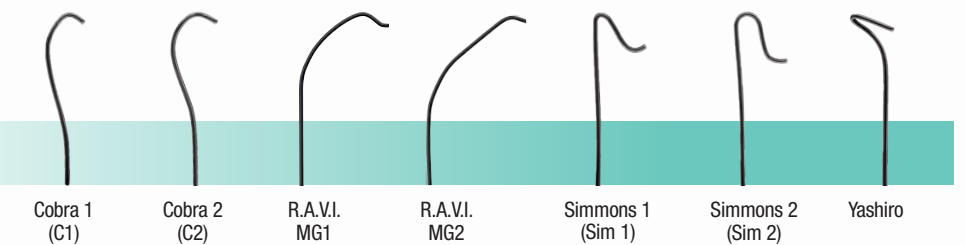
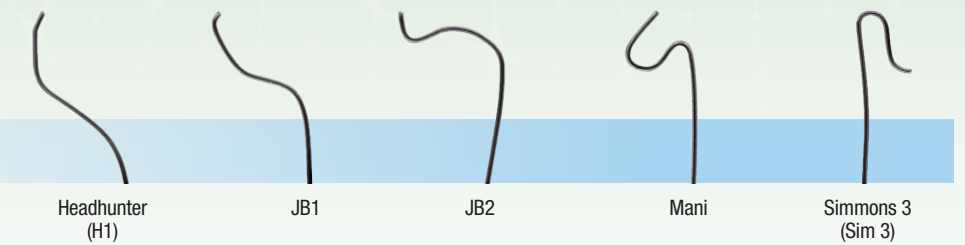


Double-braided

- Access and cross challenging lesions with excellent pushability and torquability¹
- Achieve superior device delivery through a nylon-rich inner layer^{1,a}
- Leverage superior kink resistance to maintain lumen integrity throughout the procedure^{1,a}



OPTIMAL VESSEL SELECTIVITY



TERUMO offers an impressive array of tip shapes designed for various anatomical scenarios.

^aWhen compared to Merit Impress and AngioDynamics Mariner during mechanical bench testing