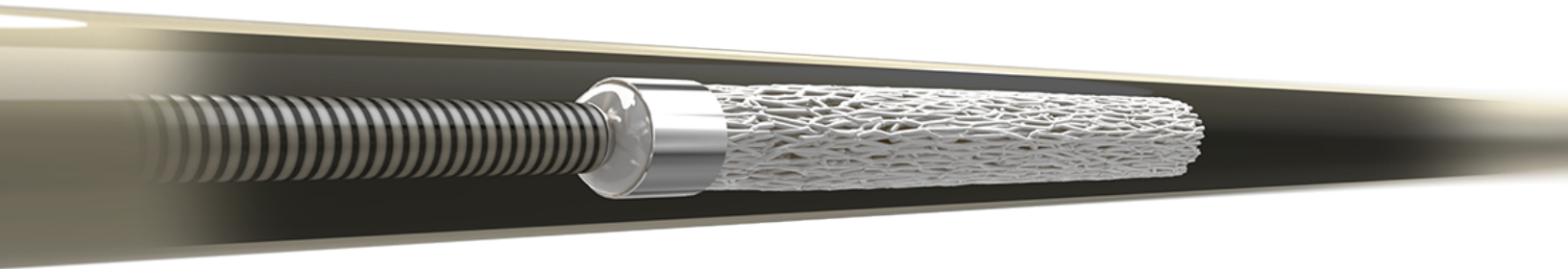
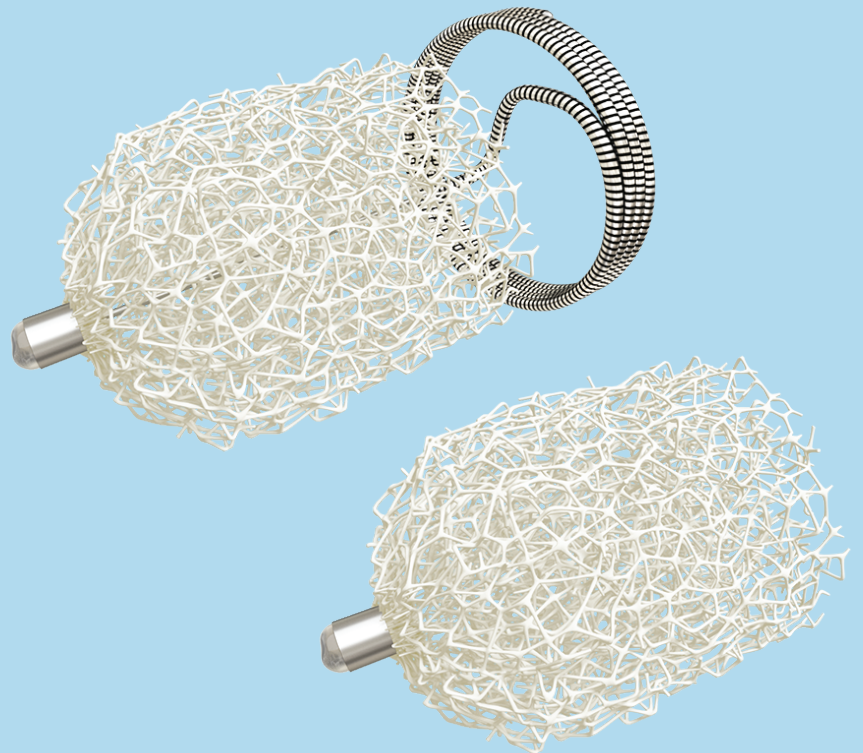


# Shape Memory Polymer

*Expanding Embolization Solutions*



Space-filling  
embolization  
technology

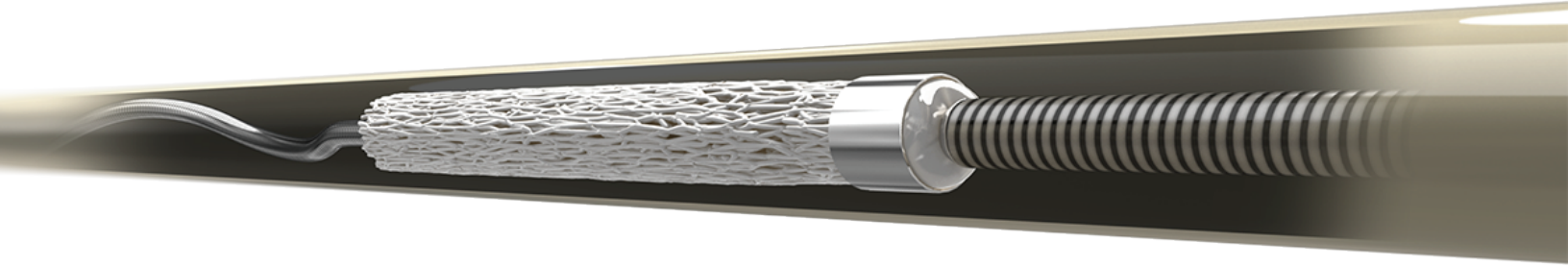


IMPEDE<sup>®</sup> & IMPEDE-FX

 **shape**<sup>®</sup>  
memory medical

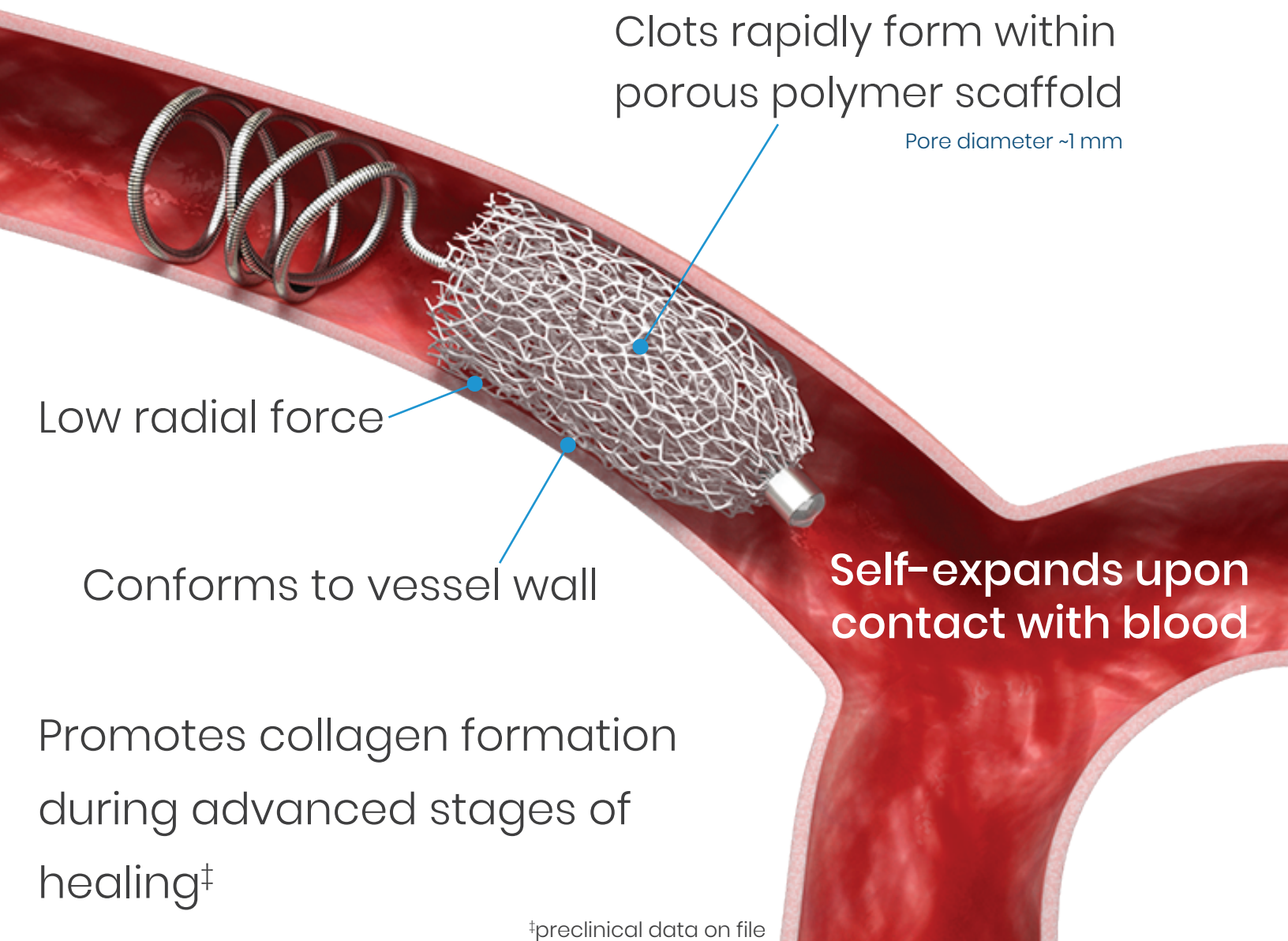
# Shape Memory Polymer Technology

Crimped for catheter delivery



Clots rapidly form within porous polymer scaffold

Pore diameter ~1 mm



Low radial force

Conforms to vessel wall

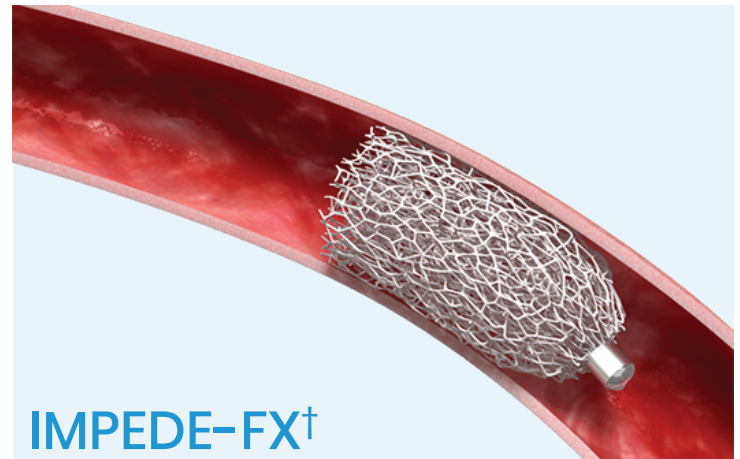
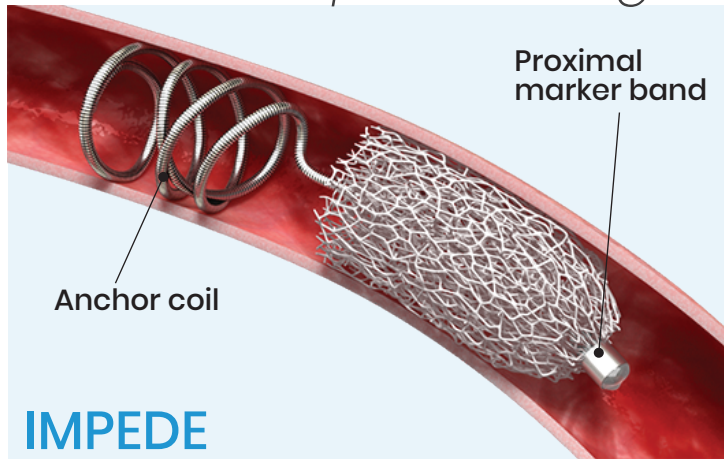
**Self-expands upon contact with blood**

Promotes collagen formation during advanced stages of healing<sup>‡</sup>

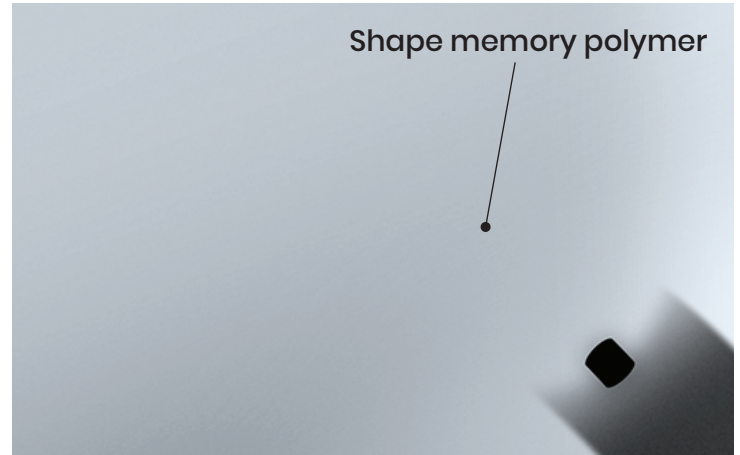
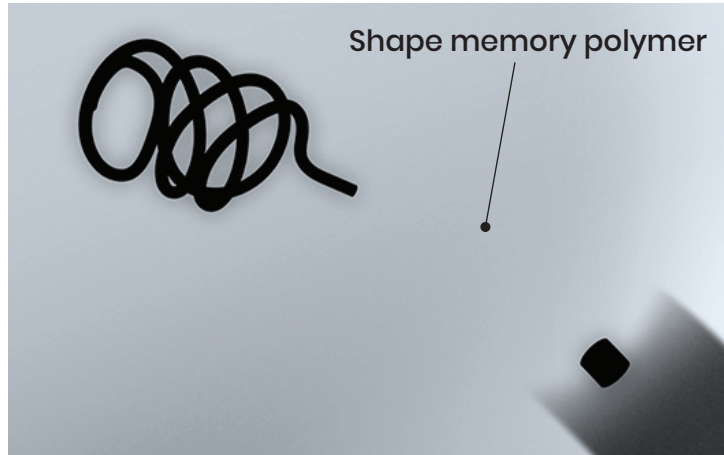
<sup>‡</sup>preclinical data on file

# Advantages in Embolization

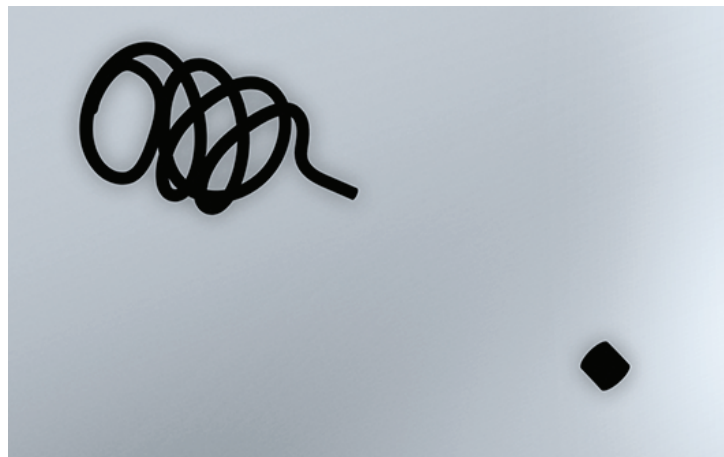
## Maximum space-filling



## Stable occlusion

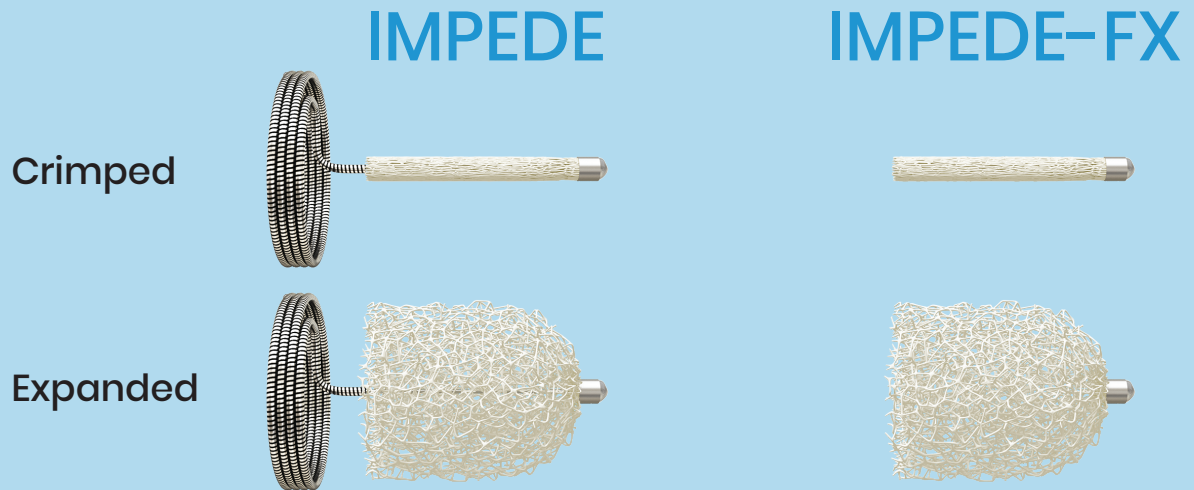


## Minimal artifact



†For illustrative purposes only, IMPEDE-FX is indicated for use in combination with IMPEDE

# Dimensions & Details



		IMPEDE			IMPEDE-FX			
		IMP-05	IMP-07	IMP-10	IMP-FX-06	IMP-FX-08	IMP-FX-12	
Vessel diameter	mm	2 - 5	4 - 7	6 - 10	—	—	—	
Proximal marker diameter	inch	.032	.046	.065	.032	.046	.065	
	mm	0.81	1.17	1.65	0.81	1.17	1.65	
Expanded SMP plug diameter	mm	6	8	12	6	8	12	
SMP plug length	mm	10	10	15	10	10	15	
Anchor coil diameter	mm	7	9	13	—	—	—	
Catheter ID*	min	inch	.038	.055	.070	.038	.055	.070
			.057	.071	.090	.057	.071	.090
	min	mm	0.97	1.40	1.78	0.97	1.40	1.78
			1.45	1.80	2.29	1.45	1.80	2.29
Compatible IMPEDE	Not applicable			IMP-05	IMP-05 IMP-07	IMP-05 IMP-07 IMP-10		

SMP, shape memory polymer. \*Catheter recommendations based on .035" guidewire

**INDICATION:** The IMPEDE Embolization Plug is indicated to obstruct or reduce the rate of blood flow in the peripheral vasculature.

**INDICATION:** The IMPEDE-FX Embolization Plug is indicated for use with the IMPEDE Embolization Plug to obstruct or reduce the rate of blood flow in the peripheral vasculature.

**CAUTION:** Federal (U.S.A.) law restricts this device to sale by or on the order of a physician. Indications, contraindications, warnings and instructions for use can be found in the product labeling supplied with each device.

The images are illustrative and do not represent actual vessel anatomy, nor the actual size of any products.

**Patent:** [www.shapemem.com/patents](http://www.shapemem.com/patents)



807 Aldo Avenue, Suite 109, Santa Clara, CA 95054 USA

+1.408.649.5175 | [info@shapemem.com](mailto:info@shapemem.com) | [www.shapemem.com](http://www.shapemem.com)

LIT002 Rev B