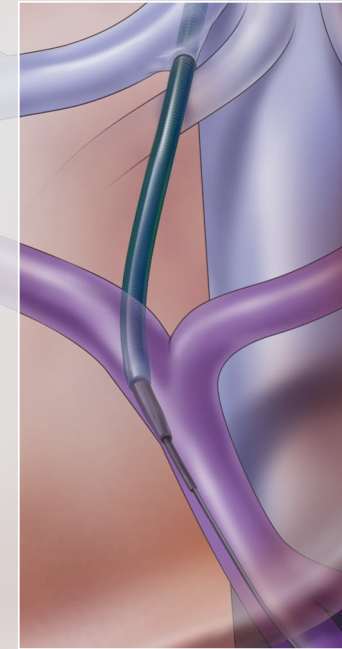


Transjugular liver access

An illustrated guide



Illustrations by *Lisa Clark*

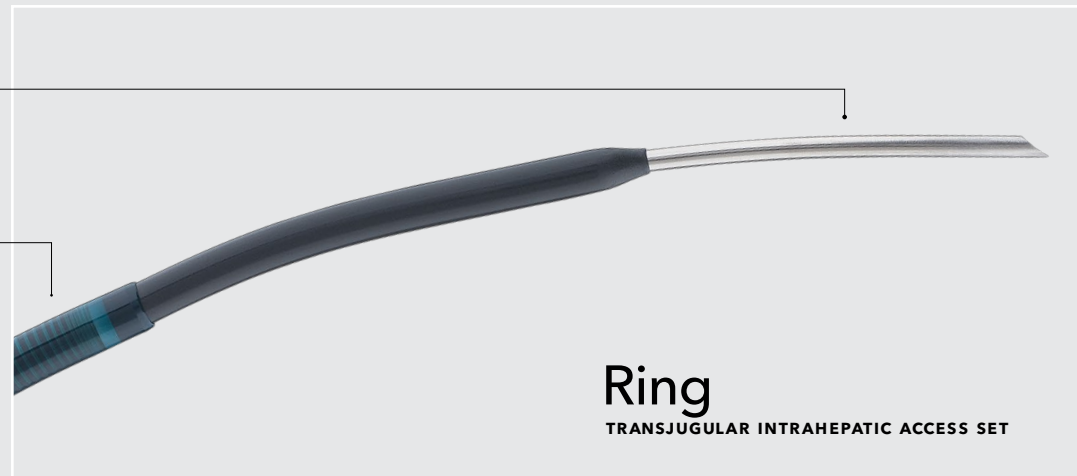
Ring

TRANSJUGULAR INTRAHEPATIC ACCESS SET

Use products that are specifically designed for transjugular liver access.

Features and benefits

- The Colapinto Needle facilitates vascular access within the liver for subsequent wire guide, catheter, and sheath placement.
- The patented Flexor® sheath provides maximum flexibility without kinking or compression.
- The radiopaque band increases visibility for precise positioning.
- The set is available in 9 and 10 Fr sizes to allow you to address a variety of patient needs.



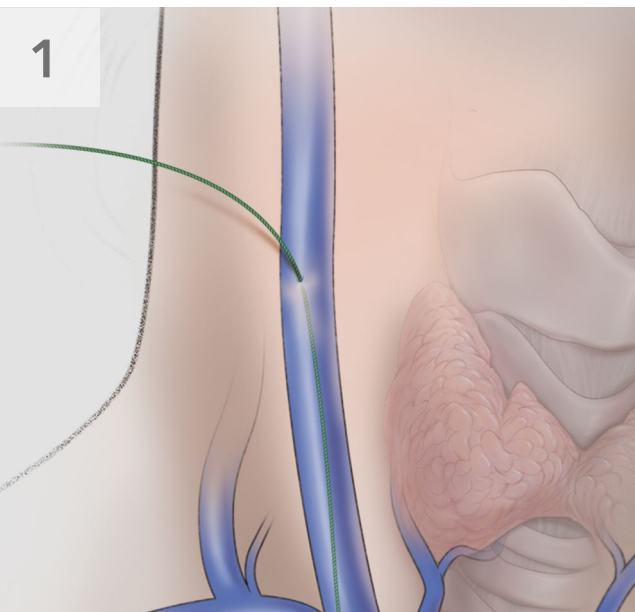
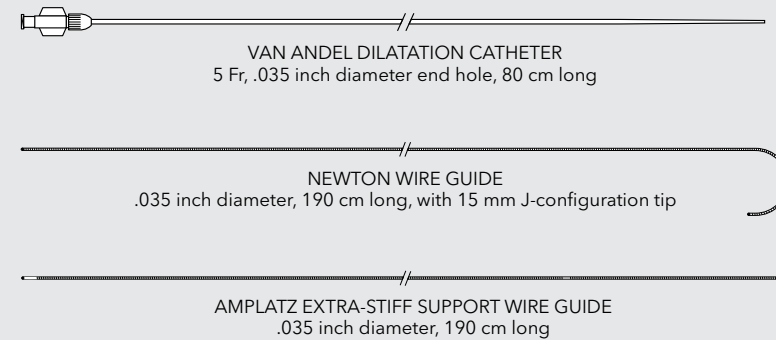
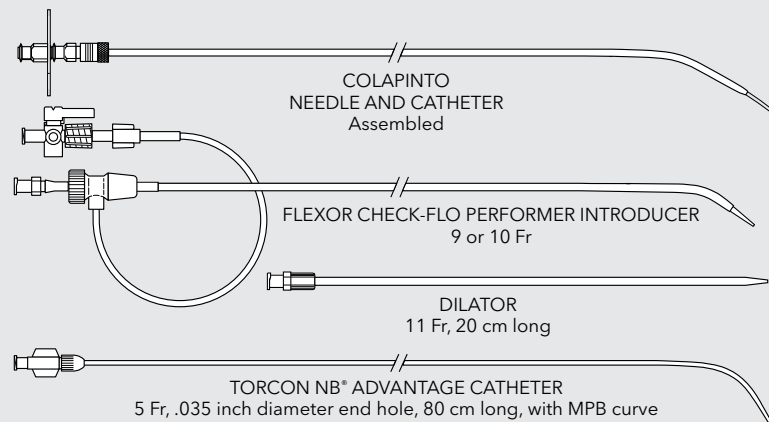
Order Number	Reference Part Number	Needle gage	Needle Length cm	Flexor Check-Flo Performer® Introducer Fr	Flexor Check-Flo Performer Introducer Length cm
G06541	RTPS-100	16	50.5	9	38.5
G29769	RTPS-100-10.0	16	50.5	10	38.5

Some products or part numbers may not be available in all markets. Contact your local Cook representative or Customer Service for details.

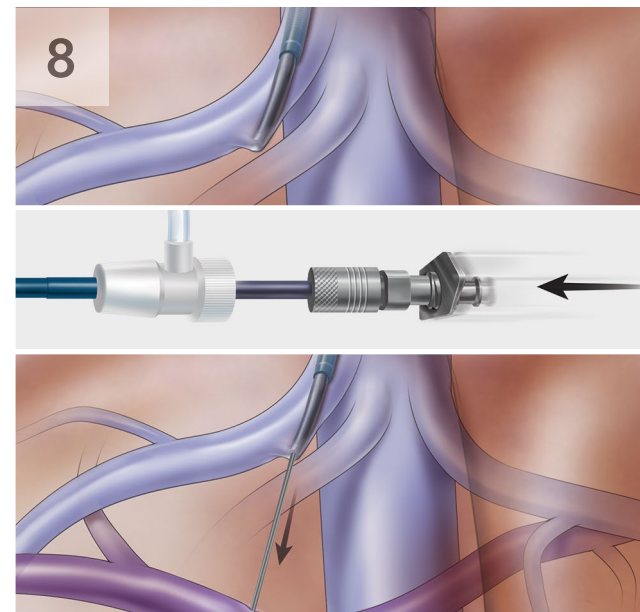
Transjugular liver access

An illustrated guide

Refer to the Instructions for Use (IFU) for complete use and prescribing information.

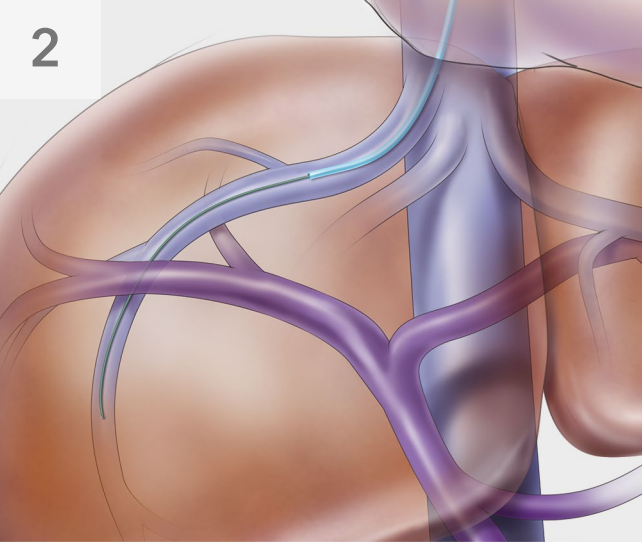


Use microaccess or standard 18 gage access techniques to introduce an appropriate .035 inch diameter wire guide into the inferior vena cava via jugular venous access.

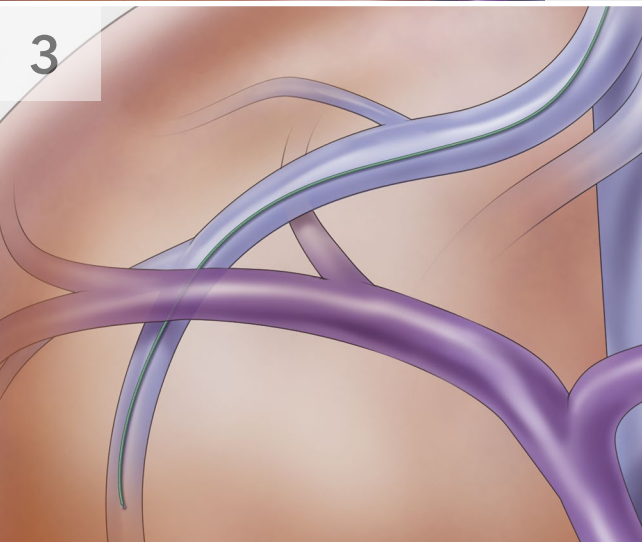


Wedge the Colapinto Needle-and-PTFE-Catheter assembly against the vein wall.

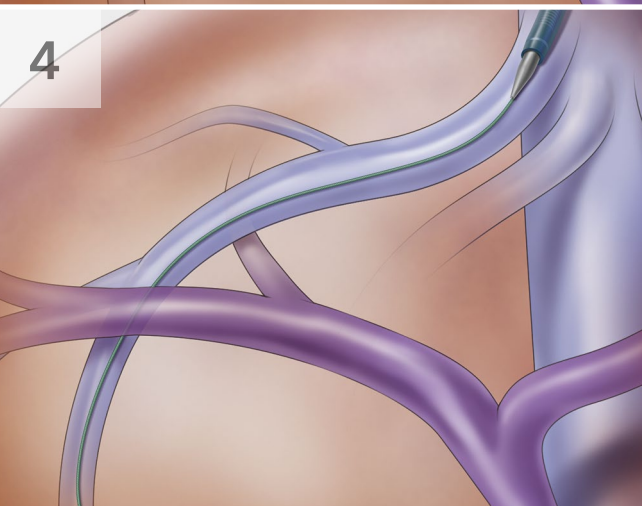
In one forward movement, thrust the needle through the hepatic parenchyma and toward the portal system.



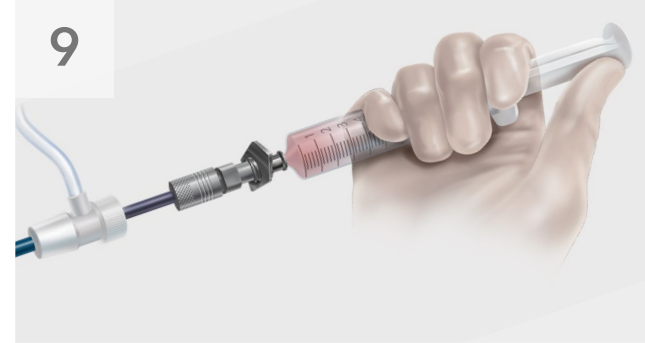
Using the Torcon NB Advantage Catheter and a wire guide of your choice, catheterize the right hepatic vein (RHV) or the most adequate hepatic vein branch.



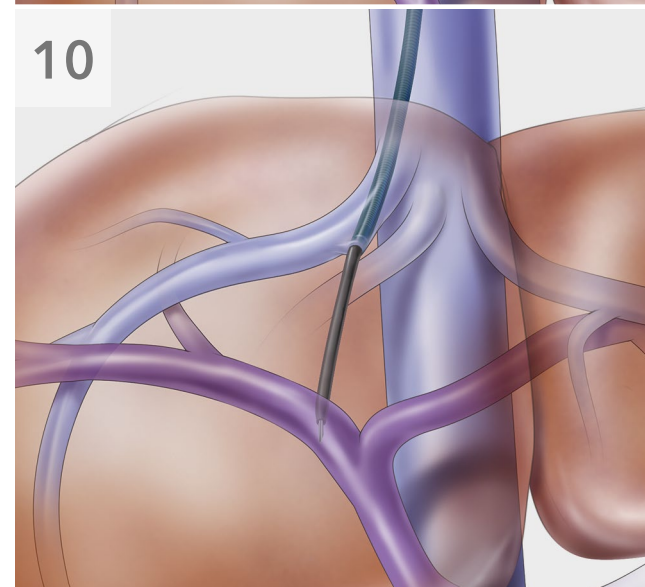
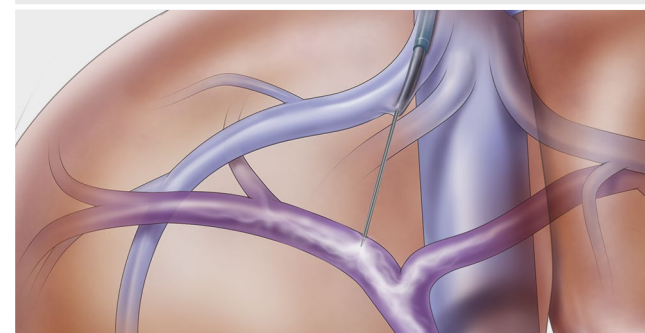
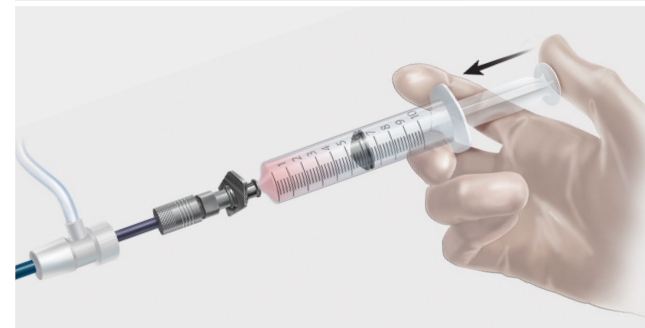
Leave the wire guide in a safe, distal position and remove the Torcon NB Advantage Catheter.



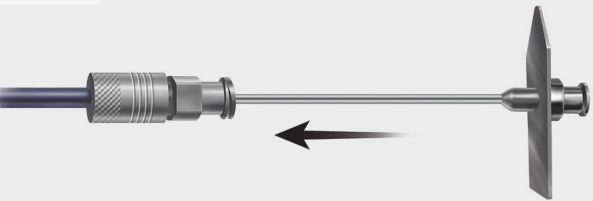
Dilate the access site with the 11 Fr dilator. Advance the Flexor introducer sheath assembly over the wire guide as distal as possible into the hepatic vein. Remove the wire guide and the Flexor Check-Flo Performer Introducer's dilator.



Connect a syringe filled with contrast medium to the needle, apply suction to the syringe, and withdraw the needle until blood is seen.

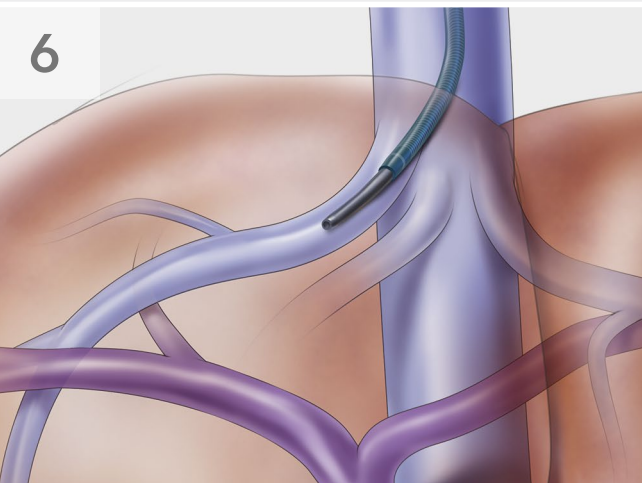


5



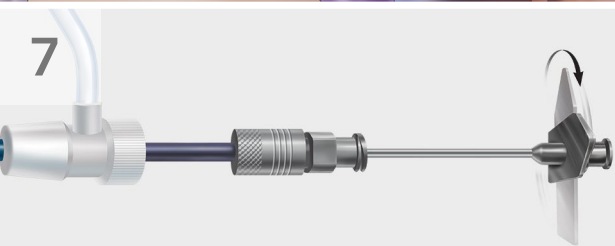
Introduce the Colapinto Needle-and-PTFE Catheter assembly through the sheath. The needle should not protrude past the catheter end hole.

6



Advance the Colapinto Needle-and-PTFE Catheter assembly into the hepatic vein.

7

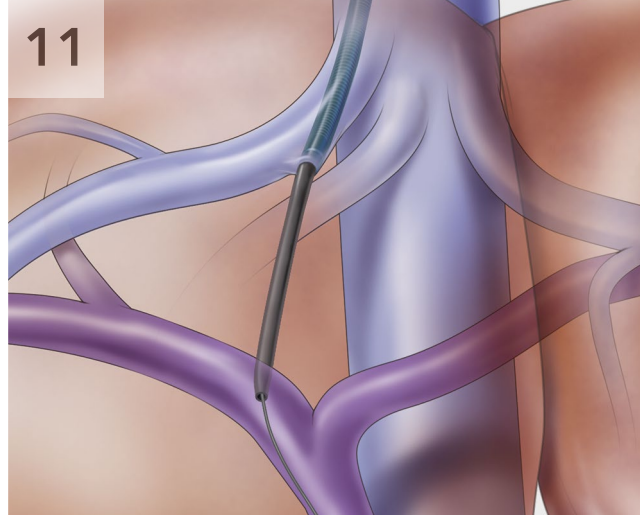


Orient the Colapinto Needle-and-PTFE-Catheter assembly inferiorly and rotate it anteriorly.



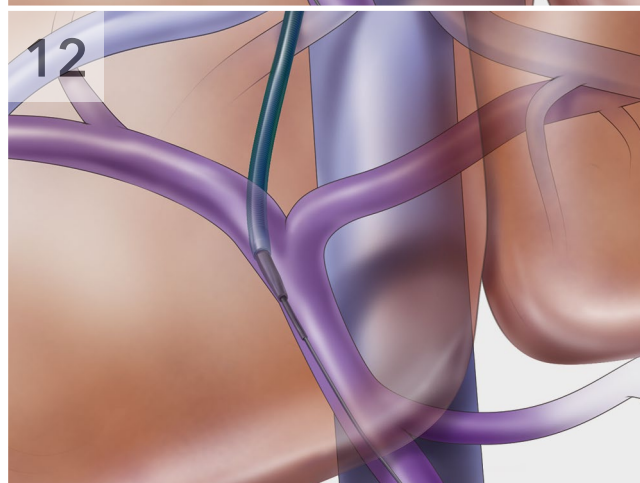
(The arrow baseplate on the needle indicates the direction of the needle curve.)

11



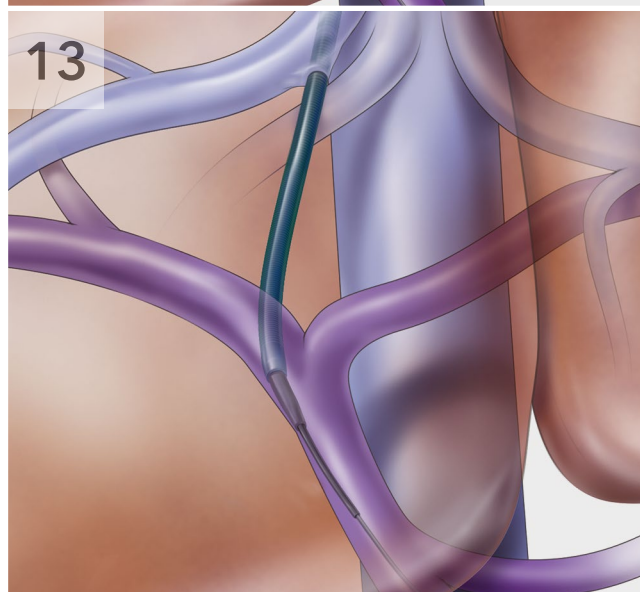
Introduce the Newton wire guide into the portal branch and select the main portal vein (MPV).

12



Advance the Colapinto PTFE transjugular catheter and Flexor Introducer sheath into position across the parenchymal tract. Advance the Van Andel catheter through the Colapinto PTFE transjugular catheter into the portal vein.

13



Proceed with any indicated interventional procedures.



Customer Service

EU Website: cookmedical.eu

EDI: cookmedical.eu/edi

Distributors: +353 61239240, ssc.distributors@cookmedical.com

Austria: +43 179567121, oe.orders@cookmedical.com

Belgium: +32 27001633, be.orders@cookmedical.com

Denmark: +45 38487607, da.orders@cookmedical.com

Finland: +358 972519996, fi.orders@cookmedical.com

France: +33 171230269, fr.orders@cookmedical.com

Germany: +49 6950072804, de.orders@cookmedical.com

Hungary: +36 17779199, hu.orders@cookmedical.com

Ireland: +353 61239252, ie.orders@cookmedical.com

Italy: +39 0269682853, it.orders@cookmedical.com

Netherlands: +31 202013367, nl.orders@cookmedical.com

Norway: +47 23162968, no.orders@cookmedical.com

Spain: +34 912702691, es.orders@cookmedical.com

Sweden: +46 858769468, se.orders@cookmedical.com

Switzerland - French: +41 448009609, fr.orders@cookmedical.com

Switzerland - Italian: +41 448009609, it.orders@cookmedical.com

Switzerland - German: +41 448009609, de.orders@cookmedical.com

United Kingdom: +44 2073654183, uk.orders@cookmedical.com

USA Website: cookmedical.com

EDI: cookmedical.com/edi.do

Americas:

Phone: +1 812.339.2235, 800.457.4500, Fax: 800.554.8335

E-mail: orders@cookmedical.com

Australia:

Phone: +61 734346000, 1800777222, Fax: +61 734346001, 1800077283

E-mail: cau.custserv@cookmedical.com-A4



AI, ESC, IR, OHNS, PI, RH, SUR-A4