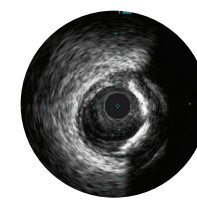
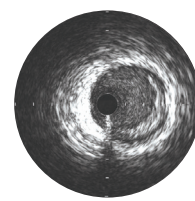
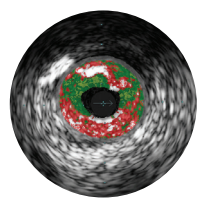
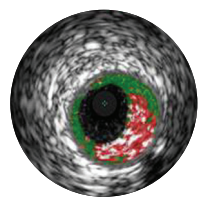


Coronary IVUS catheters

Features and specifications



Eagle Eye Platinum

Eagle Eye Platinum ST

Revolution

Refinity ST

	Eagle Eye Platinum	Eagle Eye Platinum ST	Revolution	Refinity ST
Frequency/type	20 MHz digital 64 element	20 MHz digital 64 element	45 MHz rotational single element	45 MHz rotational single element
Vessel	Coronary, peripheral	Coronary, peripheral	Coronary	Coronary
Maximum imaging diameter	20 mm	20 mm	14 mm	14 mm
Diameter at transducer	3.5F	3.5F	3.2F	3.0F
Tip entry profile	0.019"	0.019"	0.022"	0.025"
Tip-to-transducer length	10 mm	2.5 mm	29 mm	20.5 mm
Radiopaque markers	Scanner + 3 marks 10 mm apart	Scanner + 3 marks 10 mm apart	One marker + transducer	One marker + transducer
Working length	150 cm	150 cm	135 cm	135 cm
Wire lumen length	24 cm	24 cm	2.3 cm	1.55 cm
Maximum guide wire	0.014"	0.014"	0.014"	0.014"
Minimum guide catheter	5F (ID ≥ .056")	5F (ID ≥ .056")	6F (ID ≥ .064")	5F (ID ≥ .056")
Minimum sheath size	5F	5F	N/A	N/A
Delivery platform	Rapid exchange	Rapid exchange	Rapid exchange	Rapid exchange
Proprietary imaging	VH IVUS, ChromaFlo	VH IVUS, ChromaFlo	N/A	N/A
Catalog number	85900P	85900PST	89000	89900
Compatible with SyncVision	Yes	Yes	No	No

Eagle Eye Platinum and Eagle Eye Platinum ST are also indicated for peripheral applications. Safety and effectiveness of VH IVUS for use in the characterization of vascular lesions and tissue types has not been established.

For further information about Philips and its products, please visit philips.com/IGTdevices.