

# CROSS YOUR WAY

Medtronic offers a robust crossing portfolio toolkit to help you confidently navigate tortuous vasculature and cross complex lesions. No matter your preferred crossing method, Medtronic offers clinical solutions both above and below the knee.

GUIDEWIRES

SUPPORT  
CATHETERS

CROSSING  
CATHETERS

RE-ENTRY  
DEVICES

**Medtronic**  
Further, Together

# GUIDEWIRES

## Your Guide to Flexible Solutions

The Medtronic family of guidewires offers various levels of support and flexibility to meet your clinical needs.

### Nitrex™ Guidewire

The Nitrex™ guidewires provide tailored access solutions in navigating tortuous anatomy and crossing challenging lesions.



#### Nitinol Core:

- Outstanding flexibility
- Durable kink resistance

#### Gold Tungsten Tip:

- Atraumatic
- Smooth deliverability
- Radiopaque tip

#### Silicone Coating:

- Ideal tactile feel
- Optimal steerability

### Wholey™ Guidewire System

The Wholey™ guidewire system assists in placement and exchange of interventional devices in the vasculature.



#### Stainless Steel Coil:

- Optimal strength and support
- 1:1 torque

#### Platinum Tungsten Coil Tip:

- Shapeable
- Atraumatic
- Highly visible

#### PTFE Precoating:

- Consistent and smooth coating

#### 155 cm Extension System:

- Quick and precise exchange
- 145 cm and 175 cm Wholey™ guidewire compatible

# SUPPORT CATHETERS

Crossability, Visibility, Choice

The TrailBlazer™ support catheter family, available in straight and angled tips, delivers reliable pushability and visibility.

## TrailBlazer™ Support Catheter

### Non-Braided Catheter:

Enhanced trackability for efficient crossing

### Translucent Shaft:

Allows visualization within catheter

### Straight Tip:

Enables optimal vessel access and case support

### Hydrophilic Coating on Distal 40 cm:

For smooth tracking through vasculature

### Three Embedded Marker Bands:

Aids in the positioning of the catheter

### Tapered Low Profile Tip:

Allows for low lesion entry for crossing

## TrailBlazer™ Angled Support Catheter

### Braided Catheter:

Provides robust pushability to get through tough lesions

### Telescoping:

0.014" and 0.018" angled catheter can be placed through 0.035" catheter for extended reach and pushability

### Angled Tip:

Allows for Directionality for vessel selection and lesion access

## TrailBlazer™ Support Catheter

	Minimum guide sheath (F)	Minimum introducer sheath (F)	Markerband space (mm)	Product number			
				65 cm	90 cm	135 cm	150 cm
0.014"	5	4	15			SC-014-135	SC-014-150
0.018"	5	4	15		SC-018-090	SC-018-135	SC-018-150
0.035"	6	5	50	SC-035-065	SC-035-090	SC-035-135	SC-035-150

## TrailBlazer™ Angled Support Catheter

	Minimum guide sheath (F)	Minimum introducer sheath (F)	Markerband space (mm)	Size outer diameter (in)	Product number			
					65 cm	90 cm	135 cm	150 cm
0.014"	5	4	15	0.030" (2.3F)		ASC-014-090	ASC-014-135	ASC-014-150
0.018"	5	4	15	0.034" (2.6F)		ASC-018-090	ASC-018-135	ASC-018-150
0.035"	5	4	50	0.056"	ASC-035-065	ASC-035-090	ASC-035-135	ASC-035-150

# CROSSING CATHETER

## Finesse At Your Fingertips

The Viance™ crossing catheter is designed to efficiently cross chronic total occlusions via the true lumen. Without the need for battery operated or capital equipment, the Viance™ catheter allows the control of crossing to remain all in your hands.

### Viance™ Crossing Catheter

#### **OTW 0.014" Guidewire Compatible:**

Allows for above the knee and below the knee crossing

#### **Low Profile Atraumatic Tip:**

Designed for smooth crossing and minimizes risk of perforation

#### **Muti-Wire Coiled Shaft:**

Provides 1:1 torque

#### **Fast-spin Torque Handle:**

Allows for tactile, self-controlled spinning motion enabling the Viance™ catheter tip to find its ways through the lesion

#### **Ratchet:**

Audible feedback mechanism that helps ensure torque is continuously transferring

### Viance™ Crossing Catheter

Product catalog number	Description	Working length (cm)	Guidewire compatibility (in)	Crossing profile (max. in)	Sheath compatibility (F)
VNC-FX-150	Flexible	150	0.014	0.038	5
VNC-SD-150	Standard	150	0.014	0.038	5

# RE-ENTRY DEVICES

## Control At Your Fingertips

The Enteer™ re-entry system provides you with control to reliably target the true lumen from the subintimal channel above or below the knee without the need for capital equipment.

## Enteer™ Re-entry System

### Flat Shaped Self-orienting Balloon:

The Enteer™ catheter's unique balloon design self-oriens towards the true lumen within the subintimal space when inflated

### 180° and Offset Exit Ports:

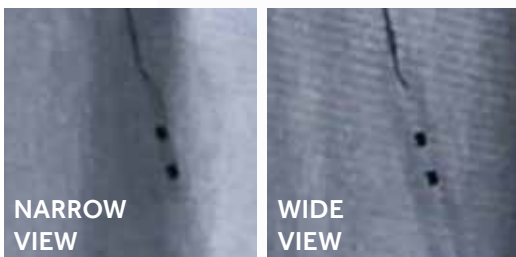
Offset exit ports are located on each side of the device allowing the Enteer™ guidewire to re-enter the correct port into the true lumen

### OTW 0.014" & 0.018" Guidewire Compatible:

Allows for flexibility during your case and minimizes guidewire exchanges

With three offerings, the 28° Enteer™ guidewires are designed to find the Enteer™ catheter exit port and re-enter true lumen

### Enteer™ catheter



### Enteer™ Re-entry Catheter

Product catalog number		Balloon size (W x H x L mm)	Working length (cm)	Guidewire compatibility (in)	Crossing profile (max. in)	Sheath compatibility (F)
ENB-375-20-135	ATK	3.75 x 1.5 x 20	135	≤ 0.018	0.066	5
ENB-275-20-150	BTK	2.75 x 1.0 x 20	150	≤ 0.018	0.066	5

### Enteer™ Guidewire

Product catalog number	Description	Diameter (in)	Length (cm)	Tip reach (mm)
ENW-FX-014-300	Flexible	0.014	300	1.5
ENW-SD-014-300	Standard	0.014	300	1.5
ENW-SF-014-300	Stiff	0.014	300	2.5

ATK stands for: above the knee  
BTK stands for: below the knee

## Nitrex™ Guidewire

Model no.	Diameter (in)	Length (cm)	Tip style	Tip length (cm)	Tip shape	Tip angle
<b>0.014"</b>						
N140801	0.014"	80	INT	5	A	15°
N141802	0.014"	180	INT	5	A	15°
N143001	0.014"	300	INT	5	A	15°
<b>0.018"</b>						
N180601	0.018"	60	INT	5	S	0°
N180603	0.018"	60	INT	7	S	0°
N180801	0.018"	80	STD	2	S	0°
N180802	0.018"	80	INT	5	A	15°
N181804	0.018"	180	STD	2	S	0°
N181805	0.018"	180	INT	5	A	15°
N181806	0.018"	180	FLOP	20	A	15°
N183001	0.018"	300	STD	2	S	0°
N183002	0.018"	300	INT	5	A	15°
<b>0.025"</b>						
N251801	0.025"	180	INT	8	A	15°
N251802	0.025"	180	STD	2	S	0°
N251601	0.025"	260	INT	8	A	15°
<b>0.035" Flexible Shaft</b>						
N351451	0.035"	145	INT	15	S	0°
N351452	0.035"	145	INT	15	A	45°
N351803	0.035"	180	INT	15	S	0°
N352601	0.035"	260	INT	15	A	45°
N354001	0.035"	400	INT	15	S	0°
<b>0.035" Stiff Shaft</b>						
N350801	0.035"	80	INT	9	S	0°
N351453	0.035"	145	FLOP	14	A	45°
N351454	0.035"	145	INT	9	S	0°
N354455	0.035"	145	FLOP	14	S	0°
N351804	0.035"	180	INT	9	S	0°
N351805	0.035"	180	STD	4	A	45°
N352602	0.035"	260	FLOP	14	S	0°
N352603	0.035"	260	STD	4	A	45°
N352604	0.035"	260	INT	9	S	0°
N353001	0.035"	300	INT	9	S	0°
N354002	0.035"	400	INT	9	S	0°

Nitrex™ sold 3/pkg

Specifications Nominal

Tip shape: A = angled tip, S = straight tip

Tip style: INT = intermediate, STD = standard tip, FLOP = floppy tip

Torque device included with 0.014" and 0.018" Nitrex guidewires.

## Wholey™ Guidewire System

Model no.	Stiffness profile	Tip style	Diameter (in)	Length (cm)
WWFS35145	Floppy	Straight	0.035	145
WWFS35175	Floppy	Straight	0.035	175
WWFS35260	Floppy	Straight	0.035	260
WWFS35300	Floppy	Straight	0.035	300
WWIJ35145	Intermediate	Modified J	0.035	145
WWIJ35175	Intermediate	Modified J	0.035	175
WWIJ35260	Intermediate	Modified J	0.035	260
WWIJ35300	Intermediate	Modified J	0.035	300
WWSS35145	Standard	Straight	0.035	145
WWSS35175	Standard	Straight	0.035	175
WWSS35260	Standard	Straight	0.035	260
WWSS35300	Standard	Straight/ shapeable	0.035	300
WWES35001 (Extension system)	NA	NA	0.035	155
WWTD35001 (Kendall™ torque device)	NA	NA	0.025" – .038"	

Wholey™ guidewires and extension system sold 3/pkg

Kendall™ torque device sold 10/pkg

Indications, contraindications, warnings, and instructions for use can be found in the product labeling supplied with each device.

**CAUTION:** Federal (USA) law restricts these devices to sale by or on the order of a physician.

# Medtronic

Aortic | **Peripheral** | endoVenous  
3033 Campus Drive, N550  
Plymouth, MN 55441  
USA

24-hour Technical Support  
Toll free: +1.800.328.2518

[medtronic.com/peripheral](http://medtronic.com/peripheral)

CardioVascular LifeLine  
Customer Support  
Tel: +1.763.526.7890  
Toll free: +1.877.526.7890

Orders  
Tel: +1.763.514.8510  
Toll free: +1.800.716.6700  
Fax: +1.877.697.4841  
Email: [rs.cusvasorders@medtronic.com](mailto:rs.cusvasorders@medtronic.com)