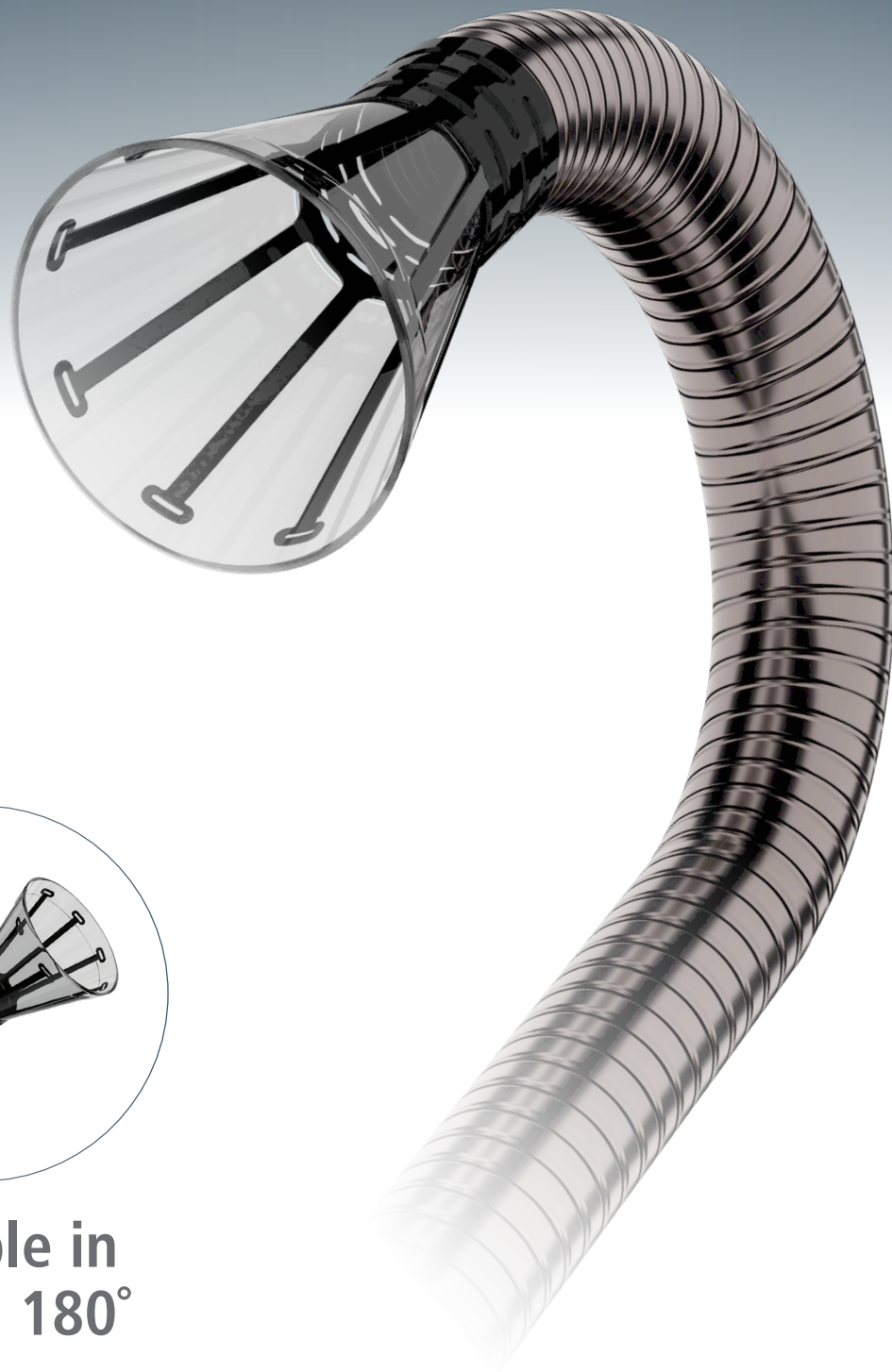


# AngioVac

Cannula and Circuit



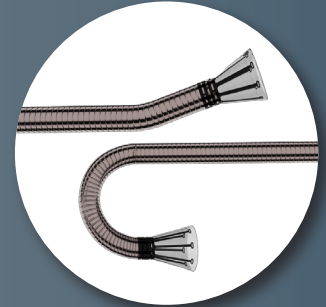
Available in  
20° and 180°

# AngioVac

Cannula and Circuit

## Proprietary Funnel Tip Design

- Available with either a 20° or a 180° angled tip
- Cannula shape options facilitate potentially easier navigation and placement through the patient's venous system
- Radiopaque nitinol tip allows for visualization under fluoroscopic imaging
- Funnel tip enhances venous drainage flow, and prevents clogging of the cannula with commonly encountered undesirable intravascular material such as soft thrombi, emboli, or vegetation
- Self-expanding funnel shape and actuated tip using slide over sheath
- Proximal locking touhy to maintain desired cannula angle
- Cannula shaft supported by a flat stainless steel coiled wire within the catheter body to support kink resistance, column strength
- Blood that is aspirated with the AngioVac Cannula is simultaneously reinfused back into the patient's body with the AngioVac Circuit to minimize blood loss



## Working Side Port and Touhy Insert

- Y-Adapter with touhy insert allows for over-the-wire capability through the working side port and accommodates up to an 17F adjunctive device
- Hydrophilic coating on the obturator allows for easier insertion through the Y-Adapter and AngioVac Cannula



## Quick Connect and Waste Collection Bag

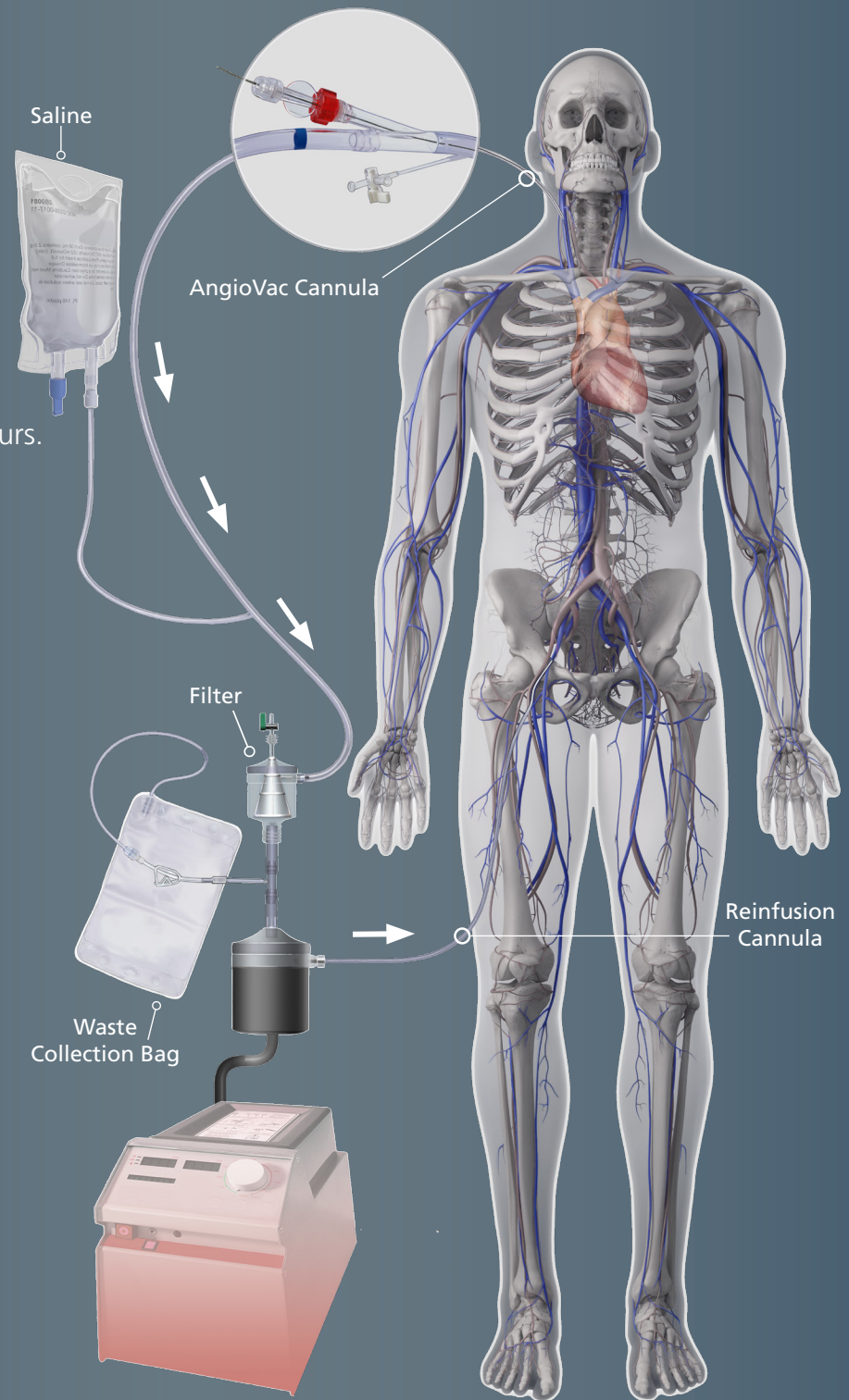
- Quick connectors allow for greater efficiency and ease of use in the surgical field. The rotating adapter allows for rotation of the AngioVac Cannula without twisting or kinking the circuit tubing
- Waste collection bag mitigates the need to administer additional fluid to patients in order to flush the filter and visualize material



# AngioVac

Cannula and Circuit

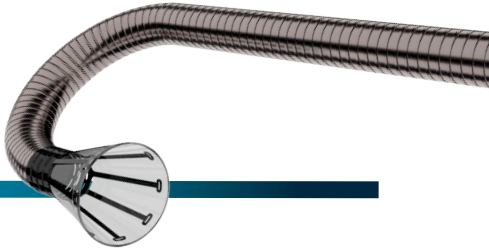
The AngioVac<sup>®</sup> System includes the venous drainage cannula and the extracorporeal circuit. AngioVac Cannula is intended for use as a venous drainage cannula and for the removal of fresh, soft thrombi or emboli during extracorporeal bypass for up to six hours.



Utilizing off-the-shelf pump, filter, and reinfusion cannula, the AngioVac Cannula facilitates venous drainage as part of an extracorporeal bypass procedure for up to six hours.

Centrifugal Pump Console

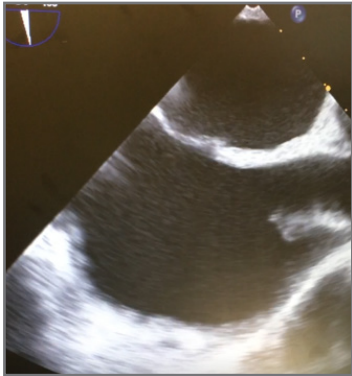
# Applications - Right heart



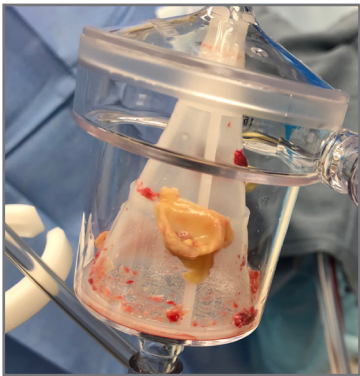
## Pacemaker Lead Vegetation



Pre



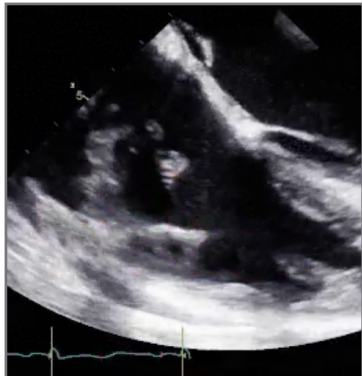
Post



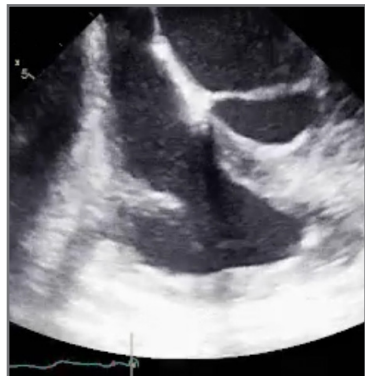
Results

*Actual procedure images and results!  
Images courtesy of Dr. Raymond Schaerf  
Providence St. Joseph Medical Center*

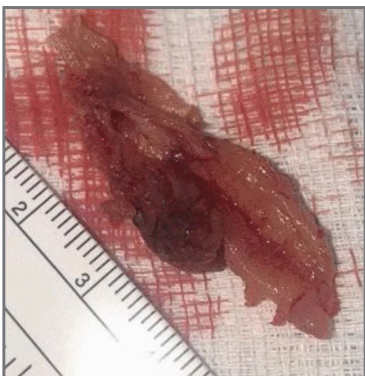
## RA Thrombus



Pre



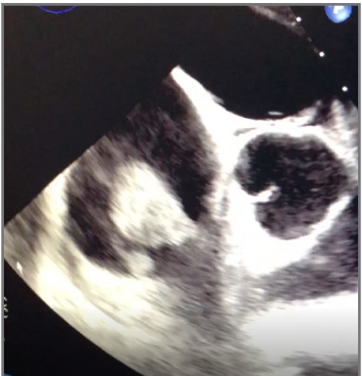
Post



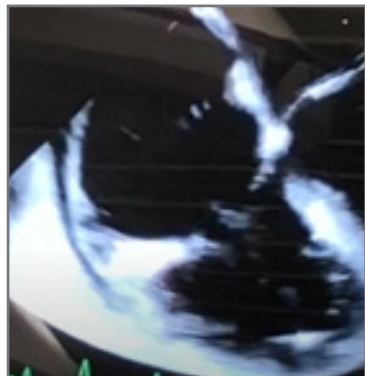
Results

*Actual procedure images and results!  
Images courtesy of Dr. Elliott Landau  
Staten Island University Hospital*

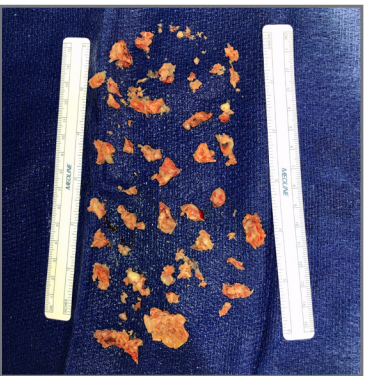
## Tricuspid Valve Endocarditis



Pre



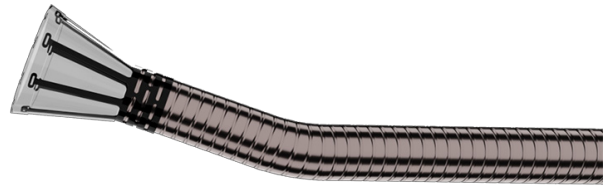
Post



Results

*Actual procedure images and results!  
Images courtesy of Dr. Vince DeGare  
Norton Hospital*

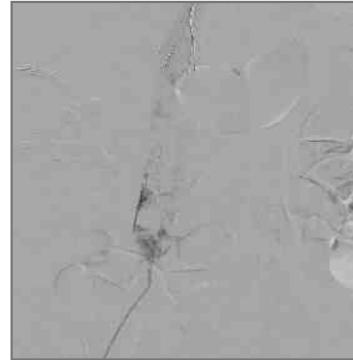
# Applications - DVT



## Iliofemoral / IVC Thrombus



Pre 1



Pre 2



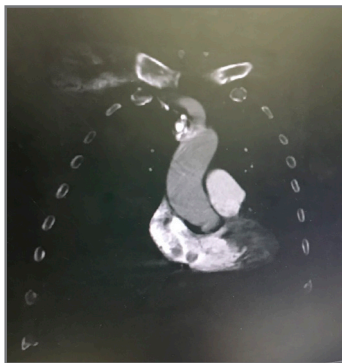
Post



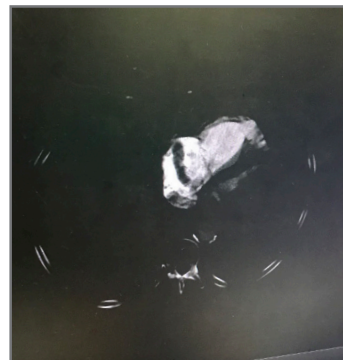
Results

*Actual procedure images and results'  
Images courtesy of Dr. Shawn Sarin  
George Washington University Hospital*

## DVT Thrombus in Transit



Pre



Post



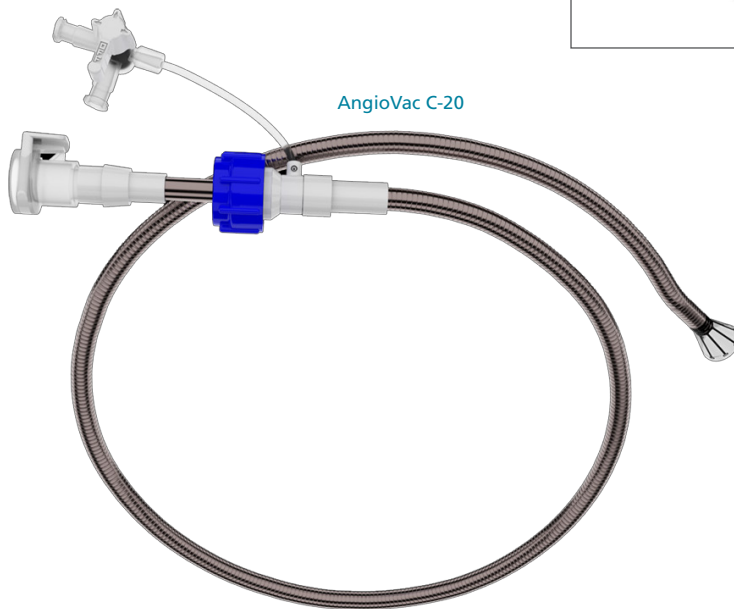
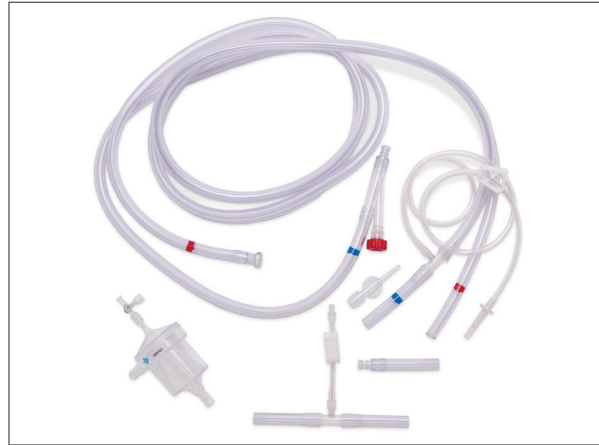
Results

*Actual procedure images and results'  
Images courtesy of Dr. David Hirschl  
Montefiore Medical Center*

## Ordering Information

Description	UPN
Cannula with Dilator (20°)	H965251930
Cannula with Dilator (180°)	H965251940
Circuit with Bubble Traps (2)	H965251880
Cannula with Dilator (20°), Circuit and Bubble Traps (2)	H965251950
Cannula with Dilator (180°), Circuit and Bubble Traps (2)	H965251960

## AngioVac Circuit



† These results represent the experience of some institutions and are not indicative of all procedure results. Results were obtained using the AngioVac Generation 2 device.

### IMPORTANT RISK INFORMATION

**Indication for Use:** The AngioVac Cannula is indicated for use as a venous drainage cannula and for removal of fresh, soft thrombi or emboli during extracorporeal bypass for up to 6 hours.

**Contraindications:** Contraindicated for patients with severe arterial or venous vascular disease, contraindicated for removal of chronic firmly adherent intravascular material (e.g., atherosclerotic plaque, chronic pulmonary embolism) and for use in the right heart or pulmonary arteries during active cardiopulmonary resuscitation.

Refer to Directions for Use and/or User Manual provided with the product for complete Instructions, Warnings, Precautions, Possible Adverse Effects and Contraindications prior to use of the product.

**Indications for Use:** The AngioVac Circuit is indicated for use in procedures requiring extracorporeal circulatory support for periods of up to six hours.

**Contraindications:** Refer to the AngioVac Cannula Directions for Use (DFU) for procedure-specific contraindications.

Refer to Directions for Use and/or User Manual provided with the product for complete Instructions, Warnings, Precautions, Possible Adverse Effects and Contraindications prior to use of the product.

**CAUTION: Federal law (USA) restricts this device to sale by or on the order of a physician.**



USA > 14 Plaza Drive, Latham, NY 12110 > tel: 800-772-6446 or 518-798-1215 > fax: 518-798-1360

[www.angiodynamics.com](http://www.angiodynamics.com)

\*AngioDynamics, the AngioDynamics logo, AngioVac and the AngioVac logo are trademarks and/or registered trademarks of AngioDynamics Inc., an affiliate or subsidiary. © 2019 AngioDynamics Inc. ANGB 257 US Rev 03 08/19