

PRECISE NAVIGATION IN CHALLENGING ANATOMY

DELIVERY SYSTEMS

The True Form Reshapable Guide Wire is a 0.014" guide wire that has been designed with the ability to be shaped and reshaped multiple times for vessel cannulation.¹

STAINLESS STEEL CORE
provides excellent support for
devices during procedures

SHAPEABLE TIP
retains shape during
procedures

FLEXIBLE SHAFT
navigates tortuous anatomy

**HYDROPHILIC
COATING**
increases trackability
through vessels



"The ability of the True Form Guide Wire to be shaped multiple times and keep its shape allows me to use the same guide wire, decreasing the need to use additional guide wires."¹

— **Shinichi Hori MD, PhD**
Chief Physician and Director, Gate Tower Institute for Image Guided Therapy

Dr. Hori is a paid consultant of Merit Medical Systems, Inc.

Exceptional pushability and torqueability are combined in the Tenor Steerable Guidewire to facilitate precise navigation in challenging anatomy during embolic procedures. The Tenor also has a highly shapeable tip for challenging anatomy, radiopaque visibility for accurate placement, smooth tracking for superb handling, and hydrophilic coating on distal segment.

**SPECIALLY
DESIGNED**
distal core

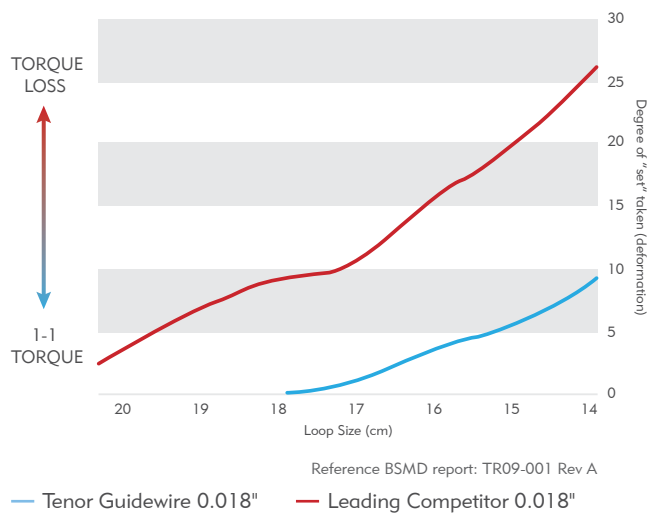
PLATINUM COIL
supported by radiopaque
polymer jacket

**STAINLESS
STEEL CORE**
innovative wire
technology

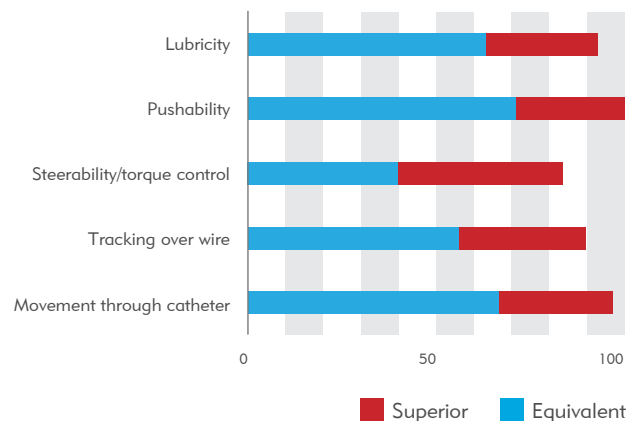
**ENVIRONMENTALLY
FRIENDLY**
PFOA-free PTFE on
proximal segment



Torque Loss Associated with Tortuosity



The Tenor Guidewire deforms less and therefore retains torque better when manipulated into a tight loop as compared to competitors in a market evaluation.¹

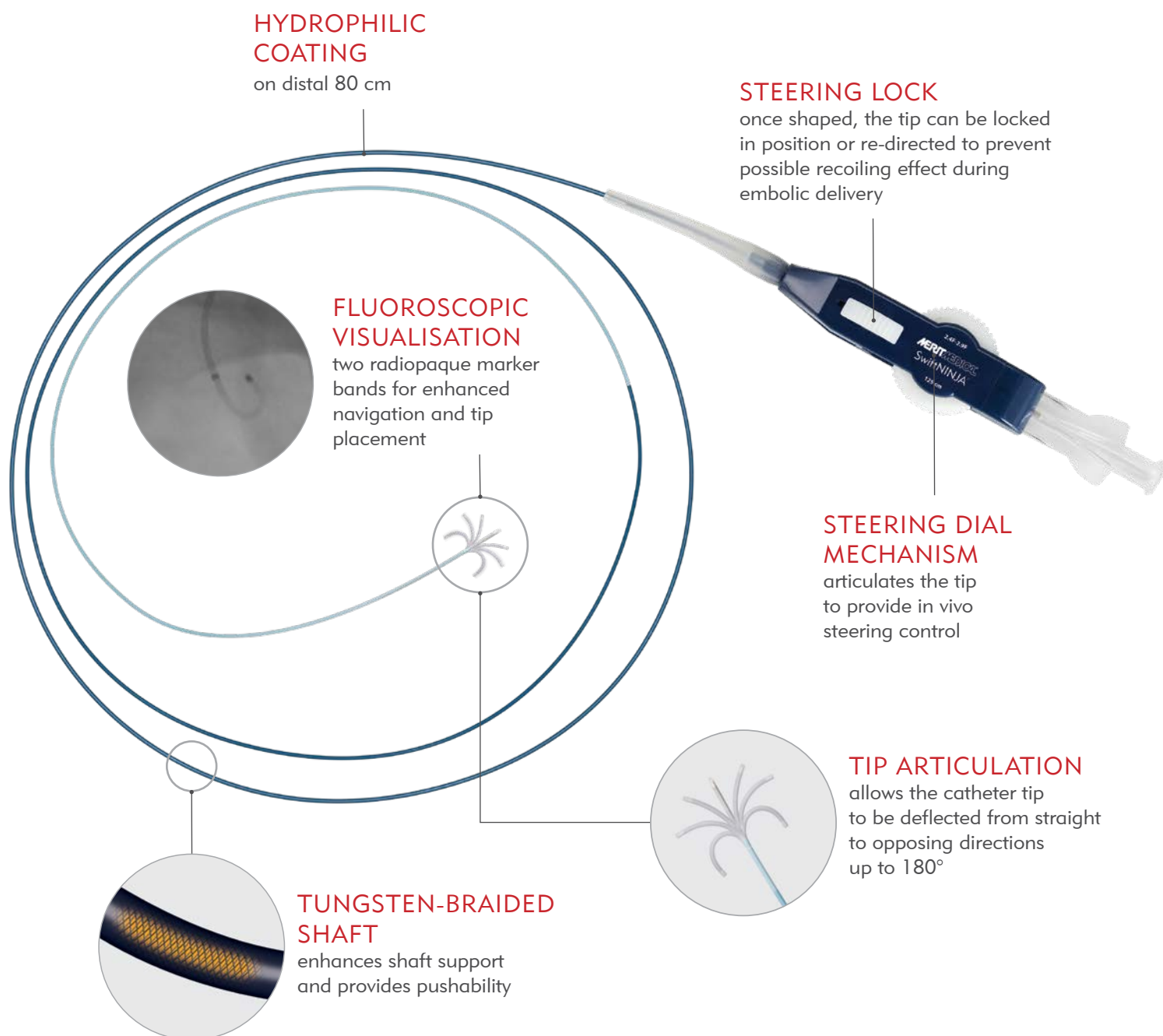


During a market evaluation more than 80% of users rated the Tenor 0.018" Guide Wire as superior or equivalent to their current wire of choice across all key product attributes.¹

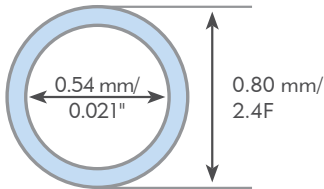
SwiftNINJA®

Steerable Microcatheter

The SwiftNINJA is the most advanced and only 180° articulating microcatheter on the market today. A straight tip catheter that articulates in opposing directions, the SwiftNINJA allows physicians to rapidly select vessels without the use of a guide wire.



Distal Tip Cross Section



Close-up of Steerable Tip



CATHETER COMPATIBILITY

French Size	Maximum Microsphere Size	Maximum Particle Size	Maximum Coil Size	Maximum Injection Pressure
2.9F - 2.4F	≤ 700 μm	≤ 710 μm	≤ 0.018" (0.46 mm)	1000 psi (6900 kPa)



"The frequent insertion and removal of guidewires during superselective catheterisation can be minimalised by using a microcatheter with an articulating tip. Using a SwiftNINJA can potentially simplify and shorten the procedure!"

— Yasuaki Arai, MD, PhD

Chief, Department of Diagnostic Radiology, National Cancer Center of Japan

Catheter Preparation for Use

To activate the hydrophilic coating: Flush the catheter with heparinized saline via the standard luer BEFORE removal from the protective catheter sleeve.

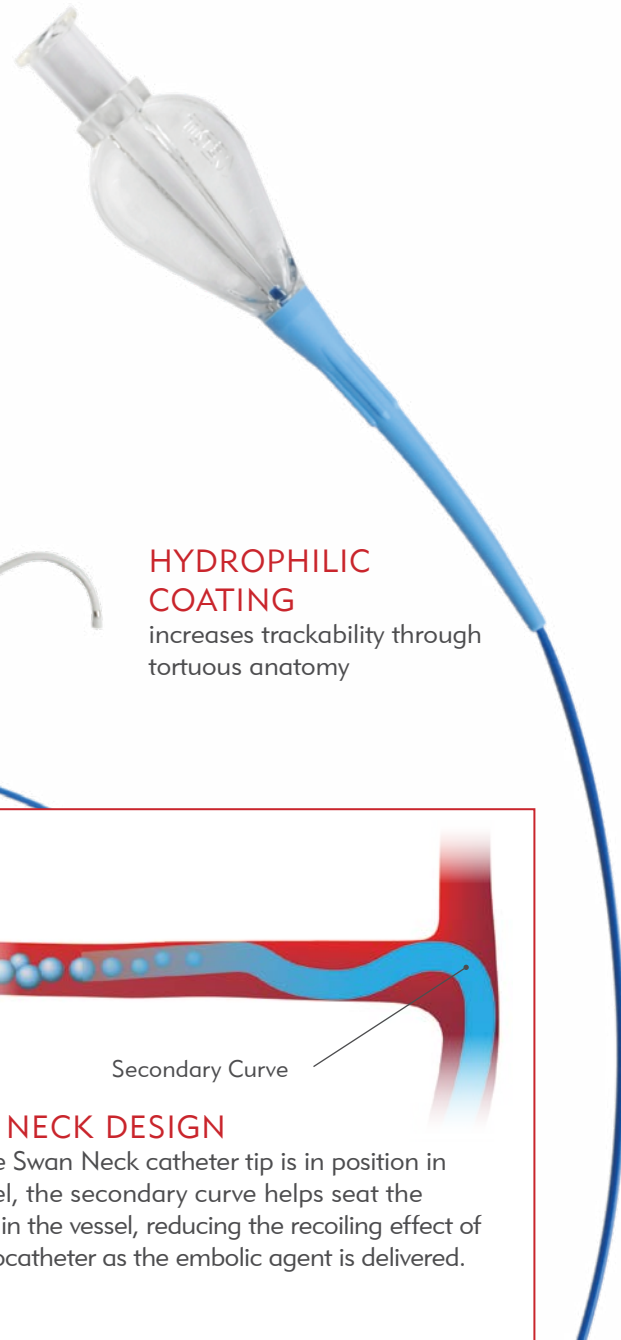
To Unlock Steering Dial (white wheel): Hold the lower housing body and gently pull the steering dial toward the luer connector until a clicking sound is heard.



Prior to attempting catheter tip movement or deflection, you must engage the steering dial.

Merit Maestro[®] MICROCATHETER

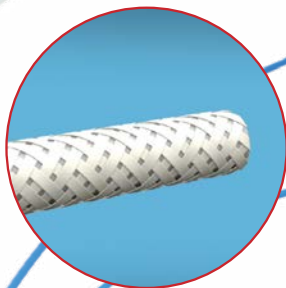
As a multipurpose microcatheter, the Merit Maestro is designed to deploy coils up to 0.018" and embolics up to and including 900 μm . Merit Maestro's swan neck design helps seat the catheter in the vessel reducing the recoiling effect of the microcatheter as the embolic is delivered.



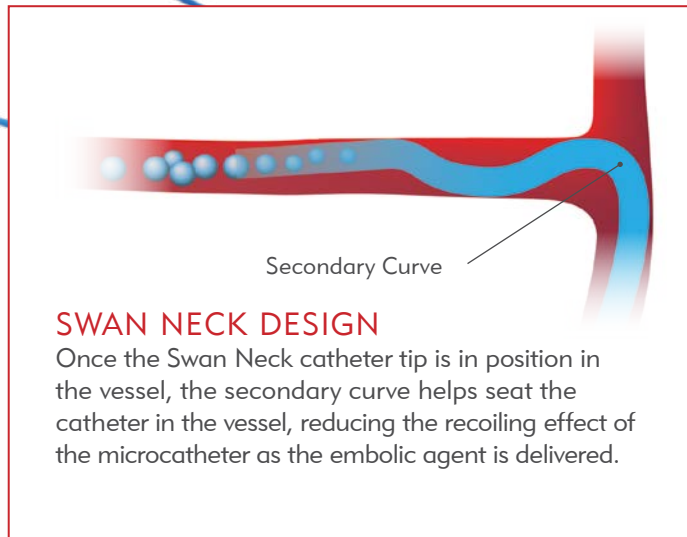
FLEXIBLE DISTAL REGION
designed for atraumatic vessel entry



HYDROPHILIC COATING
increases trackability through tortuous anatomy



NYLON RIBBON BRAIDING
provides excellent pushability, trackability, and kink recovery when crossing small, tortuous vessels



Secondary Curve

SWAN NECK DESIGN

Once the Swan Neck catheter tip is in position in the vessel, the secondary curve helps seat the catheter in the vessel, reducing the recoiling effect of the microcatheter as the embolic agent is delivered.

CATHETER COMPATIBILITY

French Size	Maximum Microsphere Size	Maximum Particle Size	Maximum Coil Size	Maximum Injection Pressure
2.8F - 2.1F	$\leq 700 \mu\text{m}$	$\leq 500 \mu\text{m}$	$\leq 0.016'' (0.41 \text{ mm})$	800 psi (5515 kPa)
2.8F - 2.4F	$\leq 700 \mu\text{m}$	$\leq 700 \mu\text{m}$	$\leq 0.018'' (0.46 \text{ mm})$	800 psi (5515 kPa)
2.8F - 2.8F	$\leq 700 \mu\text{m}$	$\leq 700 \mu\text{m}$	$\leq 0.018'' (0.46 \text{ mm})$	800 psi (5515 kPa)
2.9F - 2.9F	$\leq 900 \mu\text{m}$	$\leq 900 \mu\text{m}$	-----	800 psi (5515 kPa)

Merit Pursue™

Microcatheter

The Merit Pursue Microcatheter is a small distal French size microcatheter designed for pushability and trackability through small and tortuous vessels. The small outer diameter allows you to get deeper into the vasculature and still deliver the same embolics of larger diameter microcatheters.

Chemical Compatibility

- Ethanol • Lipiodol • DMSO (Dimethyl Sulfoxide) • Cisplatin
- Doxorubicin • Irinotecan • Cyanoacrylate



45° Straight Swan

CATHETER COMPATIBILITY

French Size	Maximum Microsphere Size	Maximum Particle Size	Maximum Coil Size	Maximum Injection Pressure
2.8F – 1.7F	≤ 500 μm	≤ 500 μm	≤ 0.014" (0.36 mm)	800 psi (5515 kPa)
2.9F – 2.0F	≤ 700 μm	≤ 710 μm	≤ 0.018" (0.46 mm)	800 psi (5515 kPa)

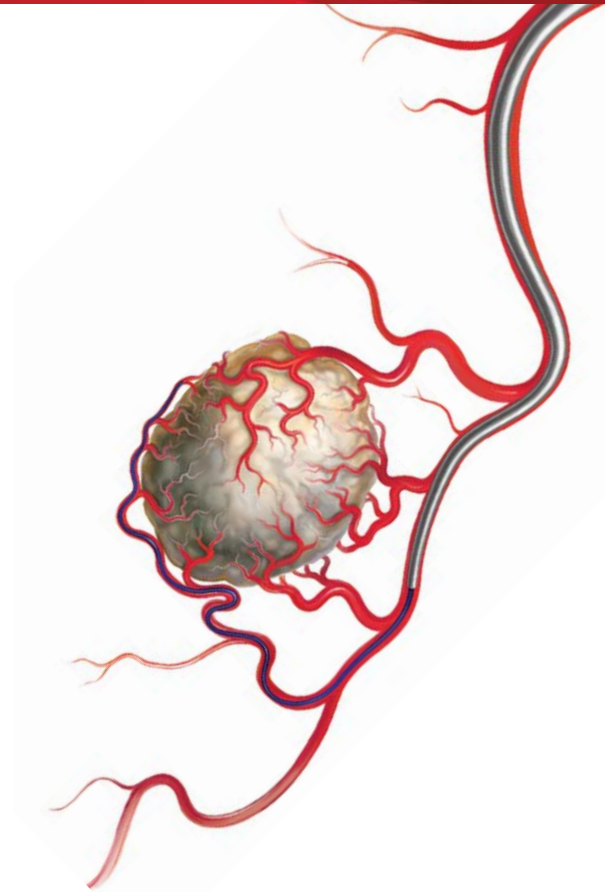
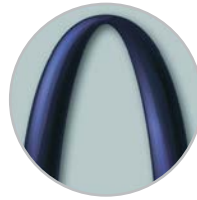
The EmboCath Plus Infusion Microcatheter is a tapered 3.0F–2.9F single lumen catheter designed specifically for embolization procedures.

- Largest inner lumen in its class for ease of embolic delivery
- Pinstripe stainless steel braiding for pushability
- Hydrophilic-coated outer diameter enhances the ability to navigate tortuous anatomy
- Single radiopaque marker to facilitate fluoroscopic visualization of catheter distal tip

EmboCath[®] Plus Catheter



Competitive Catheter



CATHETER COMPATIBILITY

French Size	Maximum Microsphere Size	Maximum Injection Pressure
3.0F – 2.9F	≤ 900 μm	800 psi (5515 kPa)

PRODUCT ORDERING INFORMATION

TRUE FORM RESHAPABLE GUIDE WIRE

Catalog Number	Outer Diameter	Length	Tip Shape	Distal Taper	Shapeable Tip	Distal Coil Length	Tip Load
TF14145S	0.014" (0.36 mm)	145 cm	Straight	36 cm	2 cm	5 cm	3.3 g
TF14165S	0.014" (0.36 mm)	165 cm	Straight	36 cm	2 cm	5 cm	3.3 g
TF14180S	0.014" (0.36 mm)	180 cm	Straight	36 cm	2 cm	5 cm	3.3 g
TF14180A	0.014" (0.36 mm)	180 cm	Angled	36 cm	2 cm	5 cm	3.3 g

PRODUCT ORDERING INFORMATION

TENOR STEERABLE GUIDEWIRE

Catalog Number	Outer Diameter	Length	Tip Shape	Shapeable Tip	Flexible Tip Length	Distal Hydrophilic Coating Length
TNR2411	0.014" (0.36 mm)	165 cm	Angled Tip	1 cm	3 cm	50 cm
TNR2412	0.014" (0.36 mm)	165 cm	Straight Tip	1 cm	3 cm	50 cm
TNR2811	0.018" (0.46 mm)	165 cm	Angled Tip	1 cm	3 cm	50 cm
TNR2812	0.018" (0.46 mm)	165 cm	Straight Tip	1 cm	3 cm	50 cm

MERIT SWIFTNINJA STEERABLE MICROCATHETER

Catalog Number	SwiftNINJA Proximal OD	SwiftNINJA Distal OD	SwiftNINJA Usable Length	SwiftNINJA Tip Shape	SwiftNINJA Hydrophilic Coating Length	
MIV-20500	2.9F	2.4F	125 cm	Articulating	80 cm	
	SwiftNINJA Distance From Tip to Distal Markerband	SwiftNINJA Distance Between 1st and 2nd Markerband	Minimum Guide Cath. ID	SwiftNINJA ID	Max. Guide Wire Size	SwiftNINJA Priming Vol.
	0.5 mm	13.5 mm	0.042" (1.07 mm)	0.021" (0.54 mm)	0.018" (0.46 mm)	0.49 mL

MERIT MAESTRO MICROCATHETER

Catalog Number	Maestro Proximal OD	Maestro Distal OD	Maestro Usable Length	Maestro Tip Shape	Maestro Hydrophilic Coating Length	Maestro Distance From Tip to Markerband	Minimum Guide Cath. ID	Maestro ID	Max. Guide Wire Size	Maestro Priming Vol.
----------------	---------------------	-------------------	-----------------------	-------------------	------------------------------------	---	------------------------	------------	----------------------	----------------------

2.8F TAPERED TO 2.1F

28MC21110ST	2.8F	2.1F	110 cm	Straight	80 cm	1.3 mm	0.040" (1.02 mm)	0.018" (0.46 mm)	0.016" (0.41 mm)	0.63 mL
28MC21130ST	2.8F	2.1F	130 cm	Straight	80 cm	1.3 mm	0.040" (1.02 mm)	0.018" (0.46 mm)	0.016" (0.41 mm)	0.70 mL
28MC21150ST	2.8F	2.1F	150 cm	Straight	80 cm	1.3 mm	0.040" (1.02 mm)	0.018" (0.46 mm)	0.016" (0.41 mm)	0.76 mL
28MC2111045	2.8F	2.1F	110 cm	45 degree	80 cm	1.3 mm	0.040" (1.02 mm)	0.018" (0.46 mm)	0.016" (0.41 mm)	0.63 mL
28MC2113045	2.8F	2.1F	130 cm	45 degree	80 cm	1.3 mm	0.040" (1.02 mm)	0.018" (0.46 mm)	0.016" (0.41 mm)	0.70 mL
28MC2115045	2.8F	2.1F	150 cm	45 degree	80 cm	1.3 mm	0.040" (1.02 mm)	0.018" (0.46 mm)	0.016" (0.41 mm)	0.76 mL

Merit Maestro Microcatheter continued on next page

PRODUCT ORDERING INFORMATION

MERIT MAESTRO MICROCATHETER CONTINUED

Catalog Number	Maestro Proximal OD	Maestro Distal OD	Maestro Usable Length	Maestro Tip Shape	Maestro Hydrophilic Coating Length	Maestro Distance From Tip to Markerband	Minimum Guide Cath. ID	Maestro ID	Max. Guide Wire Size	Maestro Priming Vol.
28MC21110SN	2.8F	2.1F	110 cm	Swan	80 cm	1.3 mm	0.040" (1.02 mm)	0.018" (0.46 mm)	0.016" (0.41 mm)	0.63 mL
28MC21130SN	2.8F	2.1F	130 cm	Swan	80 cm	1.3 mm	0.040" (1.02 mm)	0.018" (0.46 mm)	0.016" (0.41 mm)	0.70 mL
28MC21150SN	2.8F	2.1F	150 cm	Swan	80 cm	1.3 mm	0.040" (1.02 mm)	0.018" (0.46 mm)	0.016" (0.41 mm)	0.76 mL

2.8F TAPERED TO 2.4F

28MC24110ST	2.8F	2.4F	110 cm	Straight	80 cm	1.3 mm	0.040" (1.02 mm)	0.020" (0.52 mm)	0.018" (0.46 mm)	0.63 mL
28MC24130ST	2.8F	2.4F	130 cm	Straight	80 cm	1.3 mm	0.040" (1.02 mm)	0.020" (0.52 mm)	0.018" (0.46 mm)	0.70 mL
28MC24150ST	2.8F	2.4F	150 cm	Straight	80 cm	1.3 mm	0.040" (1.02 mm)	0.020" (0.52 mm)	0.018" (0.46 mm)	0.76 mL
28MC2411045	2.8F	2.4F	110 cm	45 degree	80 cm	1.3 mm	0.040" (1.02 mm)	0.020" (0.52 mm)	0.018" (0.46 mm)	0.63 mL
28MC2413045	2.8F	2.4F	130 cm	45 degree	80 cm	1.3 mm	0.040" (1.02 mm)	0.020" (0.52 mm)	0.018" (0.46 mm)	0.70 mL
28MC2415045	2.8F	2.4F	150 cm	45 degree	80 cm	1.3 mm	0.040" (1.02 mm)	0.020" (0.52 mm)	0.018" (0.46 mm)	0.76 mL
28MC24110SN	2.8F	2.4F	110 cm	Swan	80 cm	1.3 mm	0.040" (1.02 mm)	0.020" (0.52 mm)	0.018" (0.46 mm)	0.63 mL
28MC24130SN	2.8F	2.4F	130 cm	Swan	80 cm	1.3 mm	0.040" (1.02 mm)	0.020" (0.52 mm)	0.018" (0.46 mm)	0.70 mL
28MC24150SN	2.8F	2.4F	150 cm	Swan	80 cm	1.3 mm	0.040" (1.02 mm)	0.020" (0.52 mm)	0.018" (0.46 mm)	0.76 mL

2.8F NO TAPER

28MC28110ST	2.8F	2.8F	110 cm	Straight	80 cm	1.3 mm	0.040" (1.02 mm)	0.024" (0.62 mm)	0.021" (0.53 mm)	0.63 mL
28MC28130ST	2.8F	2.8F	130 cm	Straight	80 cm	1.3 mm	0.040" (1.02 mm)	0.024" (0.62 mm)	0.021" (0.53 mm)	0.70 mL
28MC28150ST	2.8F	2.8F	150 cm	Straight	80 cm	1.3 mm	0.040" (1.02 mm)	0.024" (0.62 mm)	0.021" (0.53 mm)	0.77 mL
28MC2811045	2.8F	2.8F	110 cm	45 degree	80 cm	1.3 mm	0.040" (1.02 mm)	0.024" (0.62 mm)	0.021" (0.53 mm)	0.63 mL
28MC2813045	2.8F	2.8F	130 cm	45 degree	80 cm	1.3 mm	0.040" (1.02 mm)	0.024" (0.62 mm)	0.021" (0.53 mm)	0.70 mL
28MC2815045	2.8F	2.8F	150 cm	45 degree	80 cm	1.3 mm	0.040" (1.02 mm)	0.024" (0.62 mm)	0.021" (0.53 mm)	0.77 mL
28MC28110SN	2.8F	2.8F	110 cm	Swan	80 cm	1.3 mm	0.040" (1.02 mm)	0.024" (0.62 mm)	0.021" (0.53 mm)	0.63 mL
28MC28130SN	2.8F	2.8F	130 cm	Swan	80 cm	1.3 mm	0.040" (1.02 mm)	0.024" (0.62 mm)	0.021" (0.53 mm)	0.70 mL
28MC28150SN	2.8F	2.8F	150 cm	Swan	80 cm	1.3 mm	0.040" (1.02 mm)	0.024" (0.62 mm)	0.021" (0.53 mm)	0.77 mL

Merit Maestro Microcatheter continued on next page

PRODUCT ORDERING INFORMATION

MERIT MAESTRO MICROCATHETER CONTINUED

Catalog Number	Maestro Proximal OD	Maestro Distal OD	Maestro Usable Length	Maestro Tip Shape	Maestro Hydrophilic Coating Length	Maestro Distance From Tip to Markerband	Minimum Guide Cath. ID	Maestro ID	Max. Guide Wire Size	Maestro Priming Vol.
29MC29110ST	2.9F	2.9F	110 cm	Straight	80 cm	1.3 mm	0.042" (1.07 mm)	0.027" (0.68 mm)	0.021" (0.53 mm)	0.69 mL
29MC29130ST	2.9F	2.9F	130 cm	Straight	80 cm	1.3 mm	0.042" (1.07 mm)	0.027" (0.68 mm)	0.021" (0.53 mm)	0.77 mL
29MC29150ST	2.9F	2.9F	150 cm	Straight	80 cm	1.3 mm	0.042" (1.07 mm)	0.027" (0.68 mm)	0.021" (0.53 mm)	0.85 mL
29MC2911045	2.9F	2.9F	110 cm	45 degree	80 cm	1.3 mm	0.042" (1.07 mm)	0.027" (0.68 mm)	0.021" (0.53 mm)	0.69 mL
29MC2913045	2.9F	2.9F	130 cm	45 degree	80 cm	1.3 mm	0.042" (1.07 mm)	0.027" (0.68 mm)	0.021" (0.53 mm)	0.77 mL
29MC2915045	2.9F	2.9F	150 cm	45 degree	80 cm	1.3 mm	0.042" (1.07 mm)	0.027" (0.68 mm)	0.021" (0.53 mm)	0.85 mL
29MC29110SN	2.9F	2.9F	110 cm	Swan	80 cm	1.3 mm	0.042" (1.07 mm)	0.027" (0.68 mm)	0.021" (0.53 mm)	0.69 mL
29MC29130SN	2.9F	2.9F	130 cm	Swan	80 cm	1.3 mm	0.042" (1.07 mm)	0.027" (0.68 mm)	0.021" (0.53 mm)	0.77 mL
29MC29150SN	2.9F	2.9F	150 cm	Swan	80 cm	1.3 mm	0.042" (1.07 mm)	0.027" (0.68 mm)	0.021" (0.53 mm)	0.85 mL

2.9F NO TAPER

MERIT MAESTRO MICROCATHETER WITH TRUE FORM RESHAPABLE GUIDE WIRE

Catalog Number	Maestro Proximal OD	Maestro Distal OD	Maestro Usable Length	Maestro Tip Shape	Maestro Hydrophilic Coating Length	Maestro Distance From Tip to Markerband	Minimum Guide Cath. ID	Maestro ID	Max. Guide Wire Size	Maestro Priming Vol.	True Form 0.014" Guide Wire Length
28MC24110ST-W	2.8F	2.4F	110 cm	Straight	80 cm	1.3 mm	0.040" (1.02 mm)	0.020" (0.52 mm)	0.018" (0.46 mm)	0.63 mL	165 cm
28MC24130ST-W	2.8F	2.4F	130 cm	Straight	80 cm	1.3 mm	0.040" (1.02 mm)	0.020" (0.52 mm)	0.018" (0.46 mm)	0.70 mL	180 cm
28MC24150ST-W	2.8F	2.4F	150 cm	Straight	80 cm	1.3 mm	0.040" (1.02 mm)	0.020" (0.52 mm)	0.018" (0.46 mm)	0.76 mL	180 cm
28MC2411045-W	2.8F	2.4F	110 cm	45 degree	80 cm	1.3 mm	0.040" (1.02 mm)	0.020" (0.52 mm)	0.018" (0.46 mm)	0.63 mL	165 cm
28MC2413045-W	2.8F	2.4F	130 cm	45 degree	80 cm	1.3 mm	0.040" (1.02 mm)	0.020" (0.52 mm)	0.018" (0.46 mm)	0.70 mL	180 cm
28MC2415045-W	2.8F	2.4F	150 cm	45 degree	80 cm	1.3 mm	0.040" (1.02 mm)	0.020" (0.52 mm)	0.018" (0.46 mm)	0.76 mL	180 cm
28MC24110SN-W	2.8F	2.4F	110 cm	Swan	80 cm	1.3 mm	0.040" (1.02 mm)	0.020" (0.52 mm)	0.018" (0.46 mm)	0.63 mL	165 cm
28MC24130SN-W	2.8F	2.4F	130 cm	Swan	80 cm	1.3 mm	0.040" (1.02 mm)	0.020" (0.52 mm)	0.018" (0.46 mm)	0.70 mL	180 cm
28MC24150SN-W	2.8F	2.4F	150 cm	Swan	80 cm	1.3 mm	0.040" (1.02 mm)	0.020" (0.52 mm)	0.018" (0.46 mm)	0.76 mL	180 cm

PRODUCT ORDERING INFORMATION

MERIT PURSUE MICROCATHETER

Catalog Number	Pursue Proximal OD	Pursue Distal OD	Pursue Usable Length	Pursue Tip Shape	Pursue Hydrophilic Coating Length	Pursue Distance from Tip to Marker Band	Minimum Guide Cath. ID	Pursue ID	Max. Guide Wire Size	Pursue Priming Vol.
28HC17110ST	2.8F	1.7F	110 cm	Straight	80 cm	0.6 mm	0.040" (1.02 mm)	0.016" (0.40 mm)	0.014" (0.36 mm)	0.42 mL
28HC17130ST	2.8F	1.7F	130 cm	Straight	80 cm	0.6 mm	0.040" (1.02 mm)	0.016" (0.40 mm)	0.014" (0.36 mm)	0.50 mL
28HC17150ST	2.8F	1.7F	150 cm	Straight	80 cm	0.6 mm	0.040" (1.02 mm)	0.016" (0.40 mm)	0.014" (0.36 mm)	0.53 mL
28HC1711045	2.8F	1.7F	110 cm	45 degree	80 cm	0.6 mm	0.040" (1.02 mm)	0.016" (0.40 mm)	0.014" (0.36 mm)	0.42 mL
28HC1713045	2.8F	1.7F	130 cm	45 degree	80 cm	0.6 mm	0.040" (1.02 mm)	0.016" (0.40 mm)	0.014" (0.36 mm)	0.50 mL
28HC1715045	2.8F	1.7F	150 cm	45 degree	80 cm	0.6 mm	0.040" (1.02 mm)	0.016" (0.40 mm)	0.014" (0.36 mm)	0.53 mL
28HC17110SN	2.8F	1.7F	110 cm	Swan	80 cm	0.6 mm	0.040" (1.02 mm)	0.016" (0.40 mm)	0.014" (0.36 mm)	0.42 mL
28HC17130SN	2.8F	1.7F	130 cm	Swan	80 cm	0.6 mm	0.040" (1.02 mm)	0.016" (0.40 mm)	0.014" (0.36 mm)	0.50 mL
28HC17150SN	2.8F	1.7F	150 cm	Swan	80 cm	0.6 mm	0.040" (1.02 mm)	0.016" (0.40 mm)	0.014" (0.36 mm)	0.53 mL
29HC20110ST	2.9F	2.0F	110 cm	Straight	80 cm	0.6 mm	0.042" (1.07 mm)	0.020" (0.50 mm)	0.018" (0.46 mm)	0.50 mL
29HC20130ST	2.9F	2.0F	130 cm	Straight	80 cm	0.6 mm	0.042" (1.07 mm)	0.020" (0.50 mm)	0.018" (0.46 mm)	0.57 mL
29HC20150ST	2.9F	2.0F	150 cm	Straight	80 cm	0.6 mm	0.042" (1.07 mm)	0.020" (0.50 mm)	0.018" (0.46 mm)	0.63 mL
29HC2011045	2.9F	2.0F	110 cm	45 degree	80 cm	0.6 mm	0.042" (1.07 mm)	0.020" (0.50 mm)	0.018" (0.46 mm)	0.50 mL
29HC2013045	2.9F	2.0F	130 cm	45 degree	80 cm	0.6 mm	0.042" (1.07 mm)	0.020" (0.50 mm)	0.018" (0.46 mm)	0.57 mL
29HC2015045	2.9F	2.0F	150 cm	45 degree	80 cm	0.6 mm	0.042" (1.07 mm)	0.020" (0.50 mm)	0.018" (0.46 mm)	0.63 mL
29HC20110SN	2.9F	2.0F	110 cm	Swan	80 cm	0.6 mm	0.042" (1.07 mm)	0.020" (0.50 mm)	0.018" (0.46 mm)	0.50 mL
29HC20130SN	2.9F	2.0F	130 cm	Swan	80 cm	0.6 mm	0.042" (1.07 mm)	0.020" (0.50 mm)	0.018" (0.46 mm)	0.57 mL
29HC20150SN	2.9F	2.0F	150 cm	Swan	80 cm	0.6 mm	0.042" (1.07 mm)	0.020" (0.50 mm)	0.018" (0.46 mm)	0.63 mL

EMBOCATH PLUS INFUSION MICROCATHETER

Catalog Number	EmboCath Plus Proximal OD	EmboCath Plus Distal OD	EmboCath Plus Usable Length	EmboCath Plus Tip Shape	EmboCath Plus Hydrophilic Coating Length	Minimum Guide Cath. ID	EmboCath Plus ID	Max. Guide Wire Size	EmboCath Plus Priming Vol.
ECP100	3.0F	2.9F	100 cm	Straight	40 cm	0.041" (1.04 mm)	0.028" (0.71 mm)	0.025" (0.63 mm)	0.5 mL
ECP135	3.0F	2.9F	135 cm	Straight	40 cm	0.041" (1.04 mm)	0.028" (0.71 mm)	0.025" (0.63 mm)	0.6 mL

1. Data on file

Before using refer to Instructions for Use for indications, contraindications, warnings, precautions, and directions for use.



Understand. Innovate. Deliver.™

merit.com

Merit Medical Systems, Inc.
1600 West Merit Parkway
South Jordan, Utah 84095
1.801.253.1600
1.800.35.MERIT

Merit Medical Europe, Middle East, & Africa (EMEA)
Amerikalaan 42, 6199 AE
Maastricht-Airport
The Netherlands
+31 43 358 82 22

Merit Medical Ireland Ltd.
Parkmore Business Park West
Galway, Ireland
+353 (0) 91 703 733