

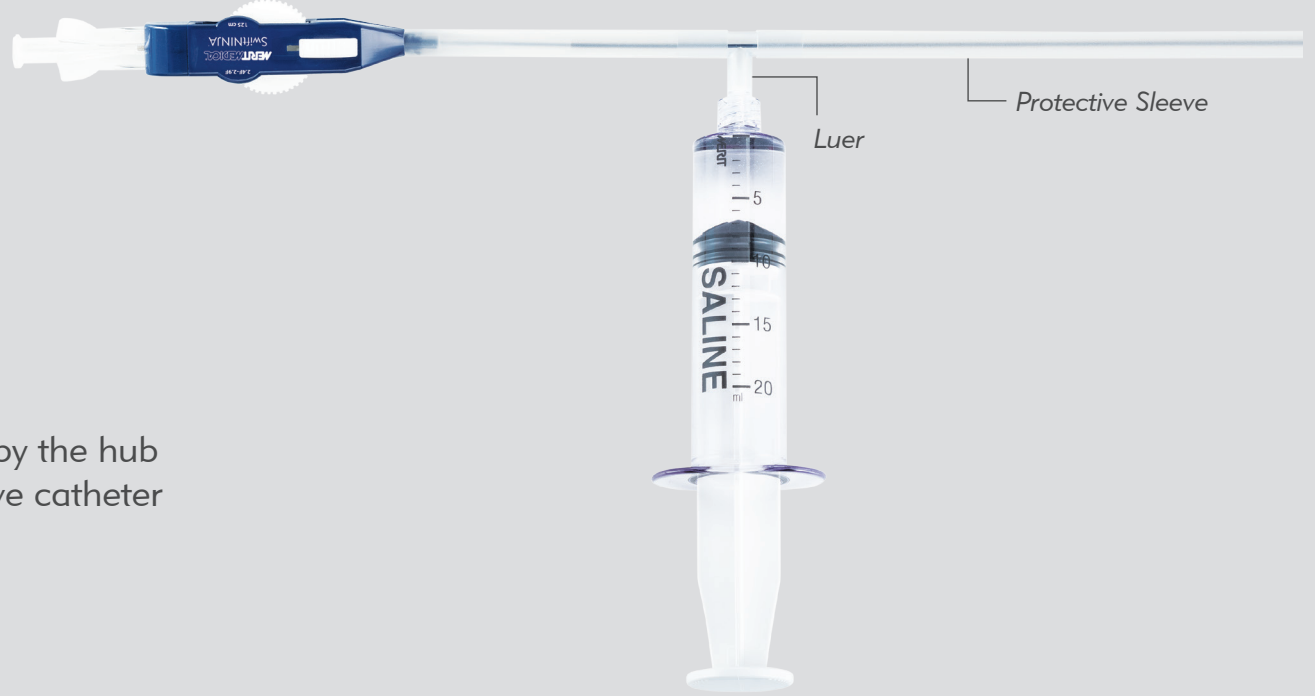
## SwiftNINJA® Steerable Microcatheter Prepping Instructions

### Hydrophilic Coating

To activate the hydrophilic coating (distal 80 cm): Flush the catheter with heparinized saline via the luer BEFORE removal from the protective catheter sleeve.

**CAUTION:**

To avoid kinking, hold the catheter by the hub and strain relief and carefully remove catheter from protective sleeve.



### Steering Dial

**It is CRITICAL that the steering dial (white wheel) is unlocked PRIOR to use.**

**To Unlock Steering Dial (white wheel)**

Hold the handgrip and gently pull the steering dial toward the luer connector until a clicking sound is heard.

Rotate steering dial to form tip in desired shape



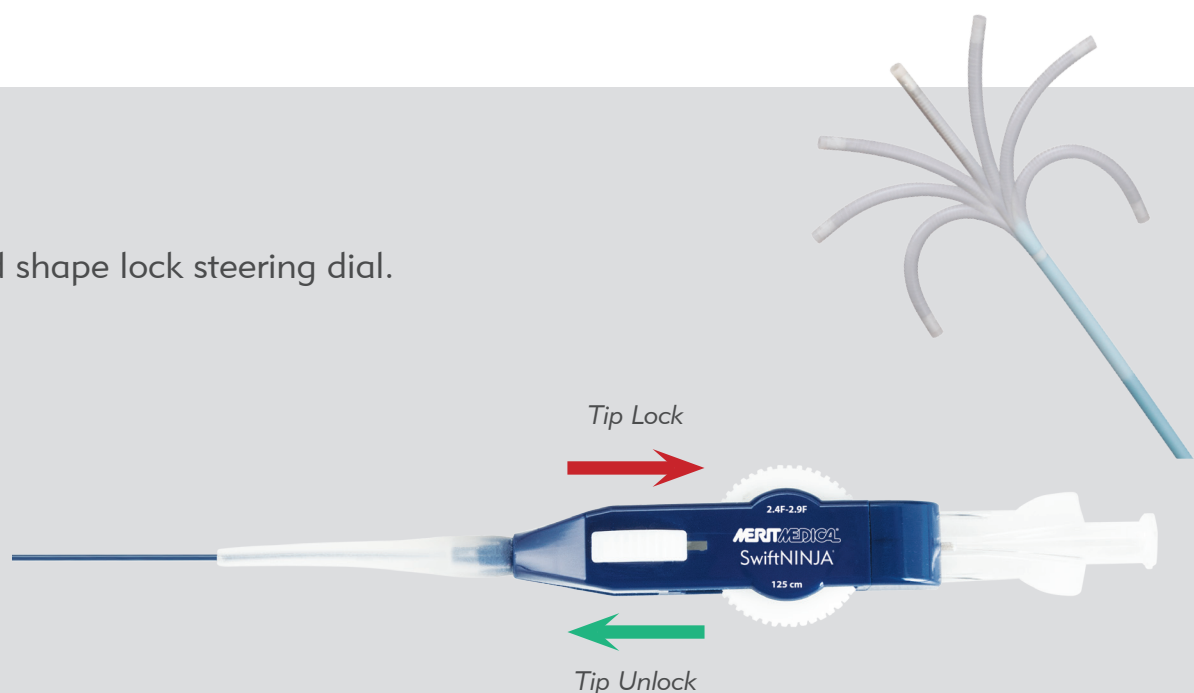
### Tip Lock

Once the tip is positioned in the desired shape lock steering dial.

**To LOCK Tip shape:**

Slide the rectangular button toward the luer connector to lock the tip into the desired shape.

The tip will remain positioned for embolic placement without the worry of recoil, loss of position or embolic displacement.



**UNLOCK** the locking mechanism prior to resuming catheter movement.



Before using, refer to Instructions for Use indications, contraindications, warnings, precautions and directions for use.



Understand. Innovate. Deliver.™

Merit Medical Systems, Inc.  
1600 West Merit Parkway  
South Jordan, Utah 84095  
1.801.208.4300  
1.800.35.MERIT

Merit.com

Merit Medical Europe, Middle East, & Africa (EMEA)  
Amerikalaan 42, 6199 AE Maastricht-Airport  
The Netherlands  
+31 43 358 82 22

Merit Medical Ireland Ltd.  
Parkmore Business Park West  
Galway, Ireland  
+353 (0) 91 703 733

Austria  
0800 295 374

Belgium  
0800 72 906 (Dutch)  
0800 73 172 (Français)

Denmark  
80 88 00 24

Finland  
0800 770 586

France  
0800 91 60 30

Germany  
0800 182 0871

Ireland (Republic)  
1800 553 163

Italy  
800 897 005

Luxembourg  
8002 25 22

Netherlands  
0800 022 81 84

Norway  
800 11629

Portugal  
308 801 034

Russia  
+7 495 221 89 02

Spain  
+34 91 1238406

Sweden  
020 792 445

Switzerland  
(Deutsch)  
+41 22 518 02 30  
(Français)  
+41 22 518 02 52  
(Italiano)  
+41 22 518 00 35

UK  
0800 973 115

401737001/A ID 072516